

## Mercedes-Benz



230SL

Jacksons Group  
Mercedes-Benz of Poole  
Holes Bay Road  
Poole, Dorset, BH15 3AU  
Tel No. 01202 666330  
Fax No. 01202 668509



**Mercedes-Benz**

# Mercedes-Benz of Poole

## A Passion for Perfection

### Classic Car Parts

Mercedes-Benz of Poole has been the Mercedes-Benz approved retailers for East Dorset and West Hampshire since 1994, when they took over the franchise from Majestic Garage. Majestic Garage were retailers for 30 years and started the Classic Parts Department in 1989 at the initiation of Mercedes-Benz who recognised that there was a need within the network for a specialist retailer to look after the requirements of the owners of the older classic Mercedes-Benz cars. When Jacksons were appointed they were happy to continue this aspect of the parts business and took over all of the stock and staff from Majestic Garage.

Mervyn Wright, who is responsible for the department, has 36 years continuous Mercedes-Benz parts experience and promises to give you the expertise and attention that your car deserves.

#### Using the catalogue

- The diagrams are the complete set from our original parts catalogues
- The views are mainly looking back from the left side front
- Illustrations are for LHD and may vary for RHD versions
- The pagoda catalogue is based on the 250/280sl and there are variations for the 230sl
- We only supply new parts and wherever possible these are OEM from DaimlerChrysler
- Reproduction parts are clearly marked as such
- Parts in the price list are the most popular items and are not a comprehensive list of available parts
- The appearance of a part in the price list is not a guarantee of its current or continued availability
- All prices quoted are correct at date of publication but DaimlerChrysler review prices on a rolling basis and all prices should be checked prior to order as parts will be invoiced at the price applicable on date of invoice
- Prices are unit retail exc. Carriage and V.A.T.
- OEM parts are the latest DaimlerChrysler specification and may vary from the original fitted parts

#### Ordering

When ordering please quote the chassis and engine numbers for the vehicle and use the table and item numbers to identify parts.

All orders must be pre-paid; we accept all major credit and debit cards. Items specially ordered are not cancellable and if correctly supplied are non-returnable. Items correctly supplied from stock will be accepted for return up to 7 days after receipt, and will be subject to a handling charge. All returns must be authorised and shipped pre-paid quoting the supply invoice number. These conditions do not affect your statutory rights.

#### Shipping

Goods in the UK will normally be despatched by either Letter post or Overnight carrier. Unless specific instructions are received, we will use our own judgement in line with the value and weight and use the most appropriate option.

Overseas parcels will normally be sent airmail or international parcel service. Please advise if you have any special despatch requirements.

Tel. Mervyn Wright on (++44) (0) 1202 6663330  
e-mail: mervyn.wright@mercedes.co.uk

Fax. (++44) (0) 1202 668509

# M127 ENGINE

TABLE 1/1 ENGINE BLOCK

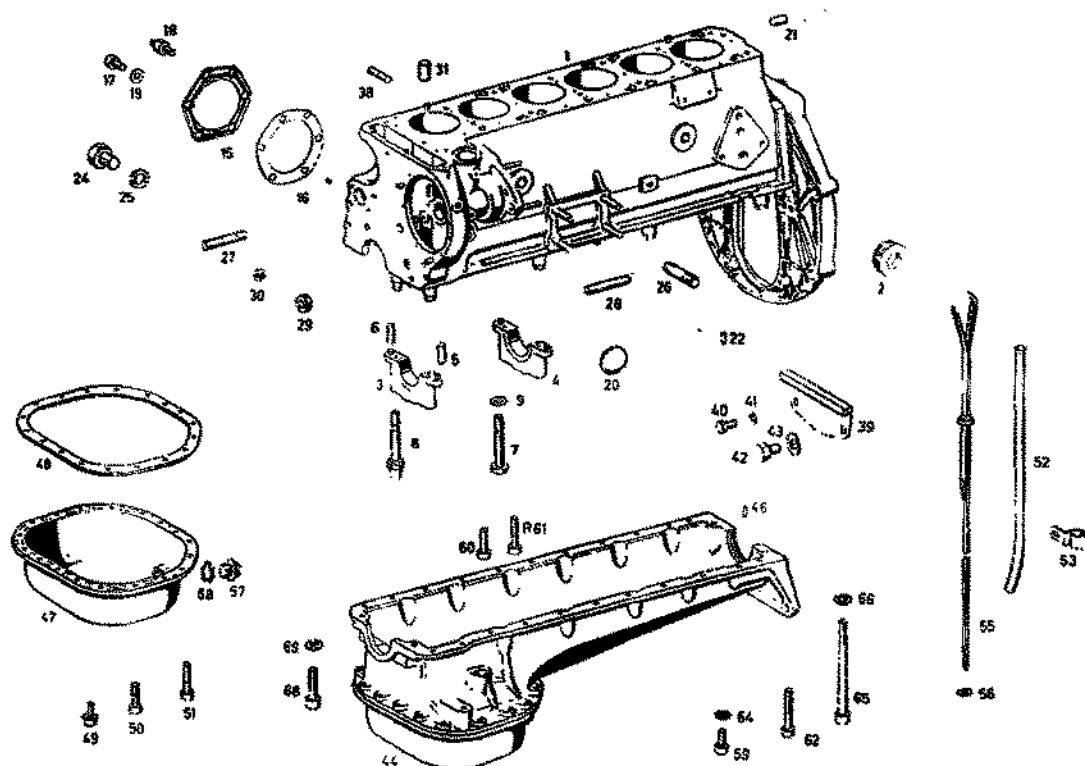


TABLE 1/2 CYLINDER HEAD

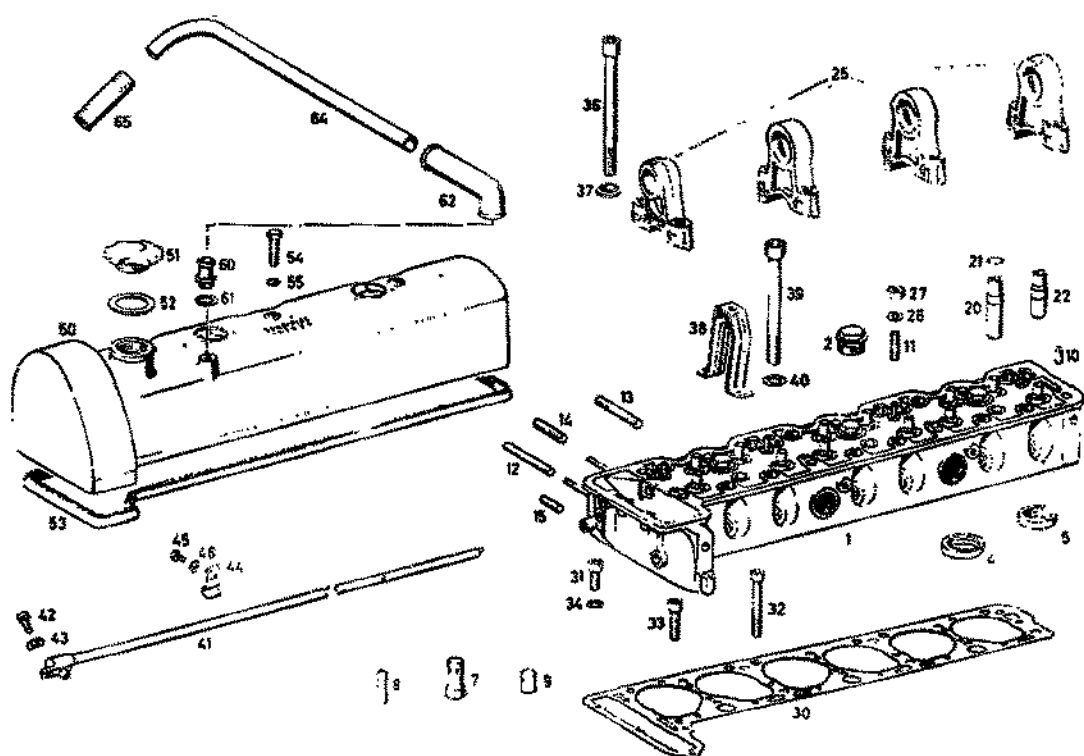


TABLE 3 CRANKSHAFT &amp; PISTONS

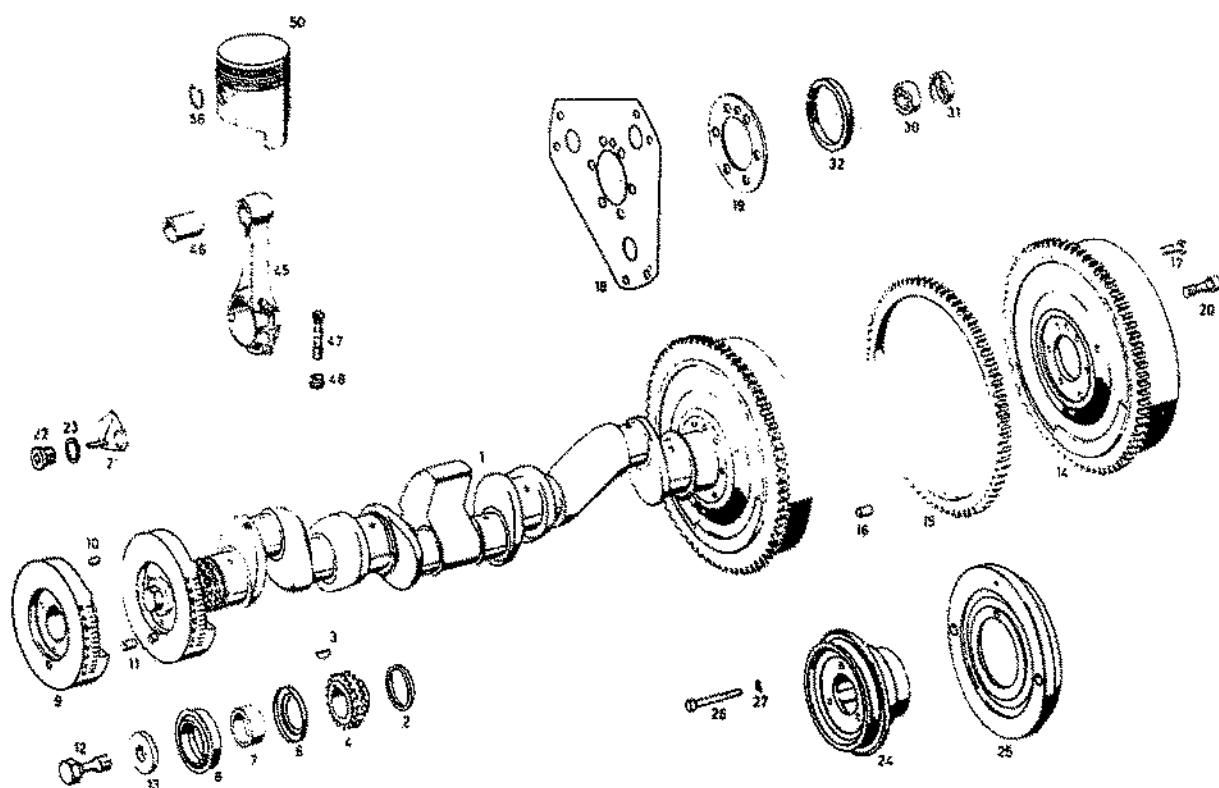
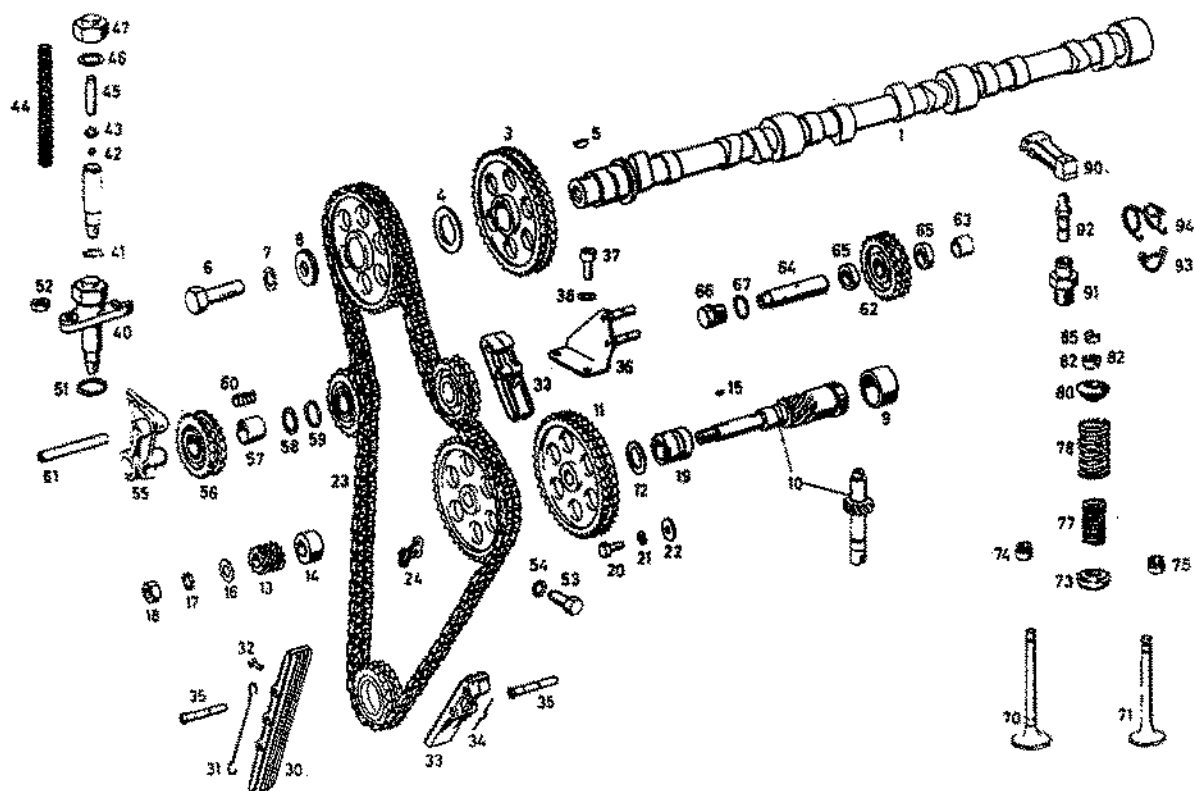


TABLE 5 TIMING GEAR &amp; VALVES



## M127 ENGINE

TABLE 7/1 INJECTION

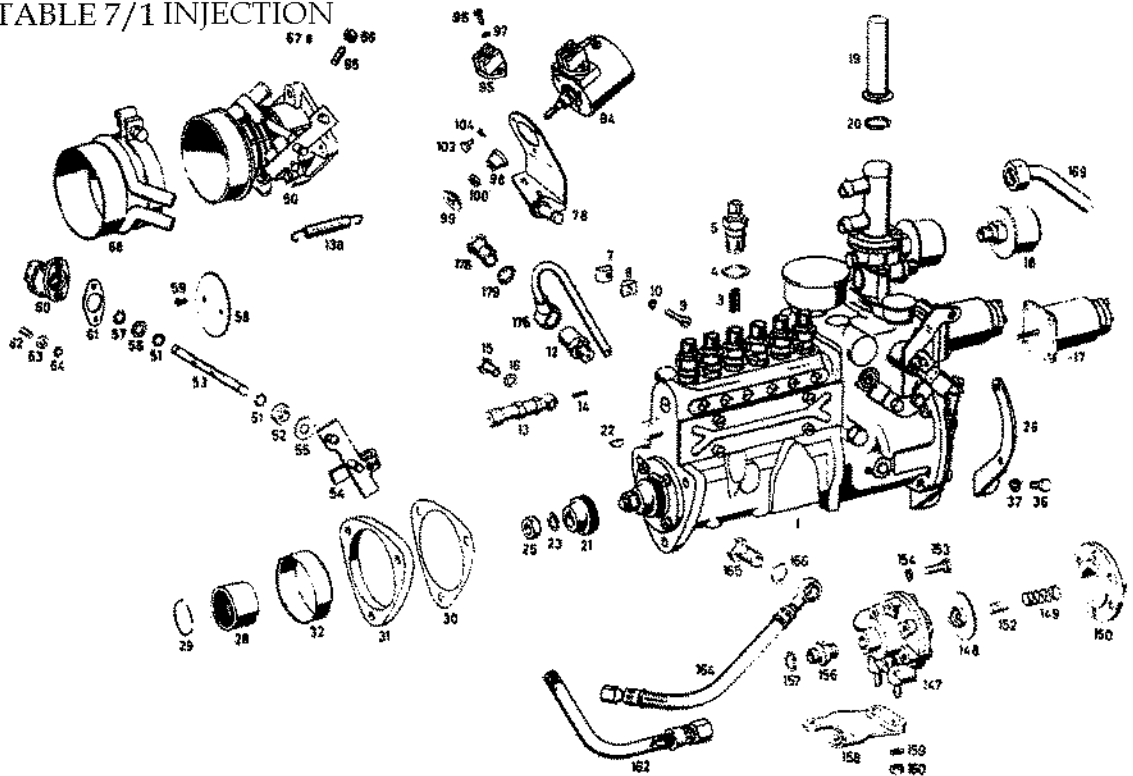
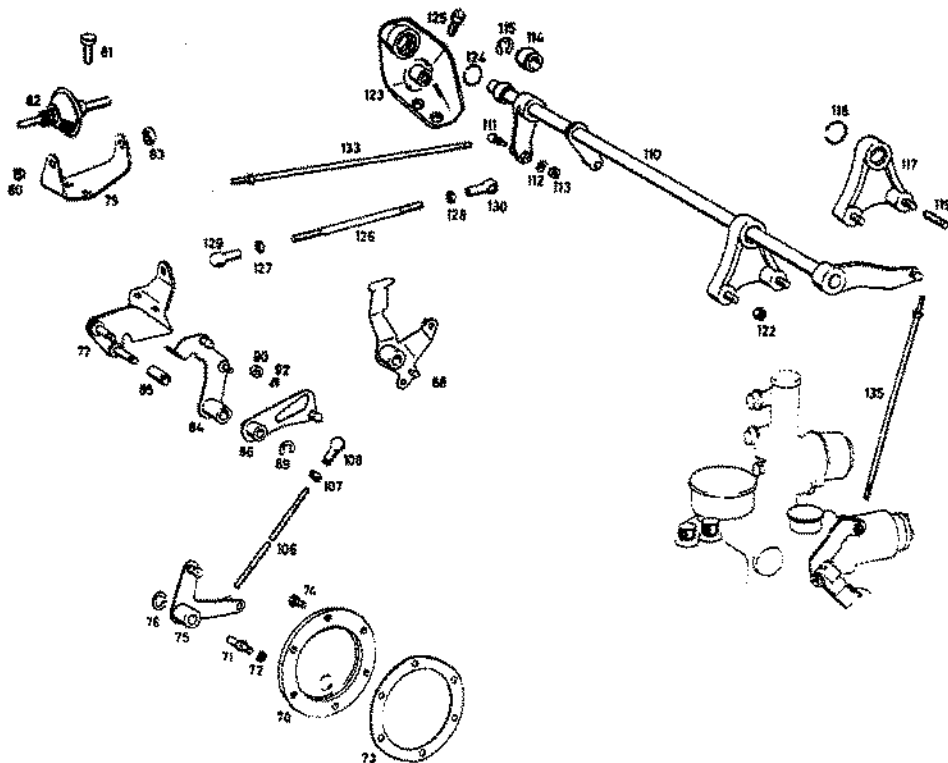
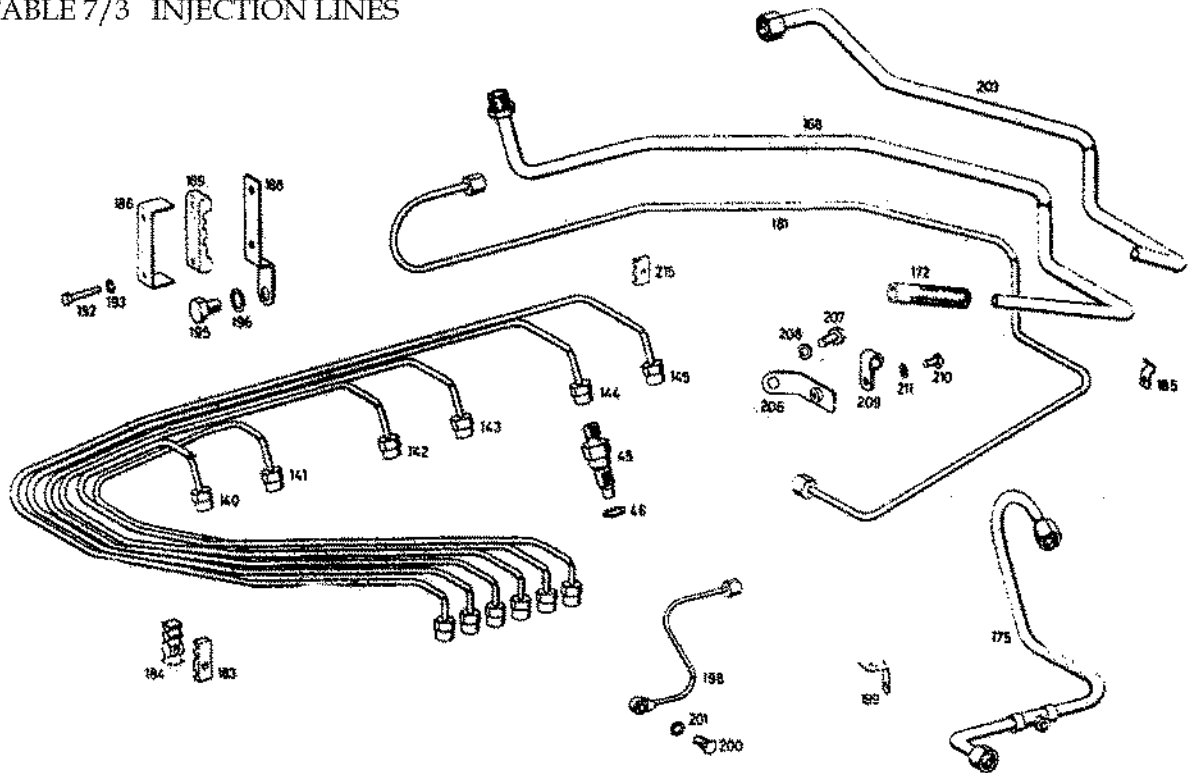


TABLE 7/2 INJECTION LINKAGE



# M127 ENGINE

## TABLE 7/3 INJECTION LINES



## TABLE 9 AIR FILTER & FUEL FILTER

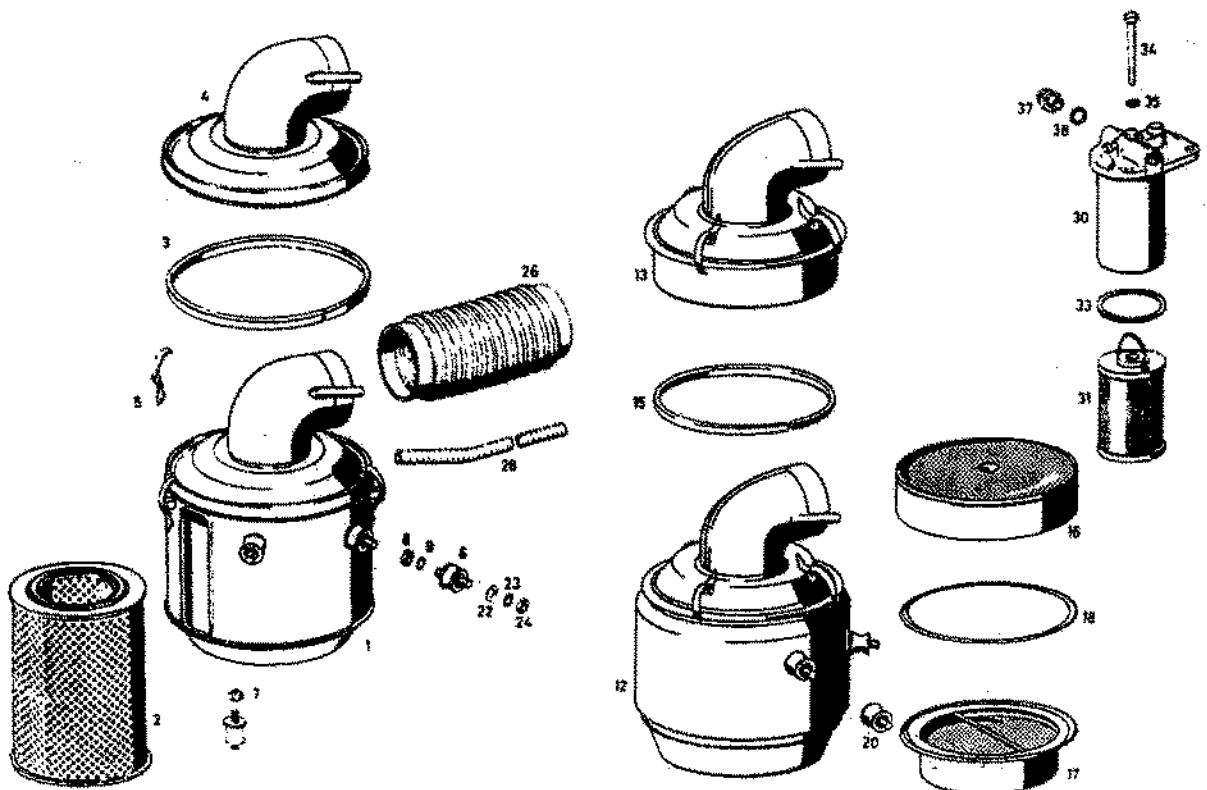


TABLE 14 MANIFOLDS

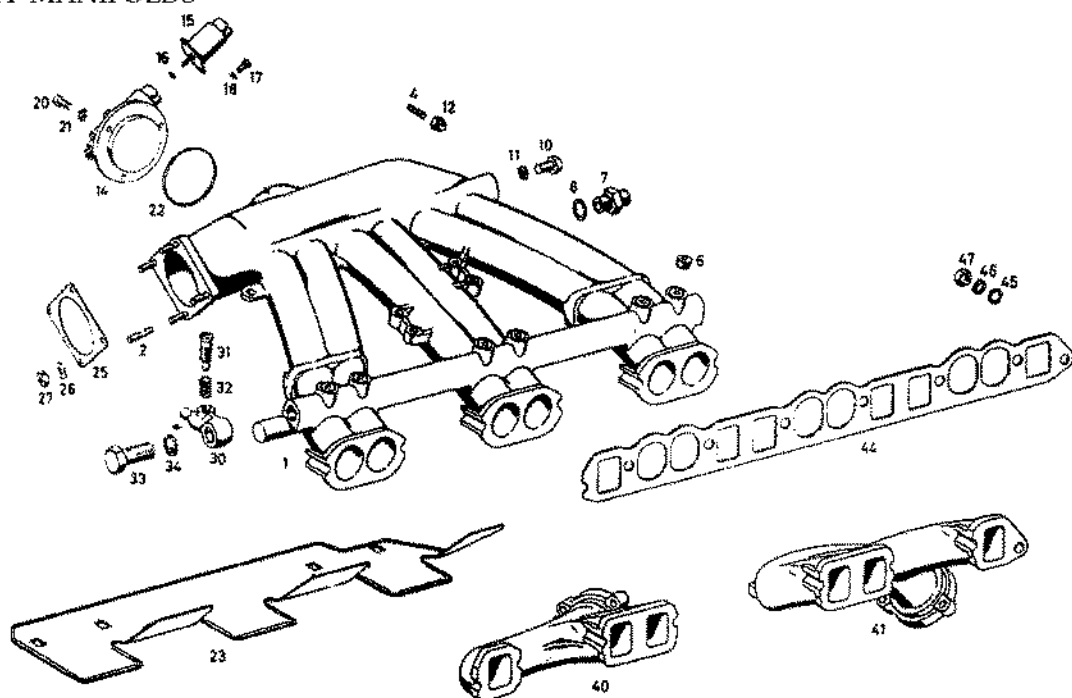


TABLE 15 IGNITION

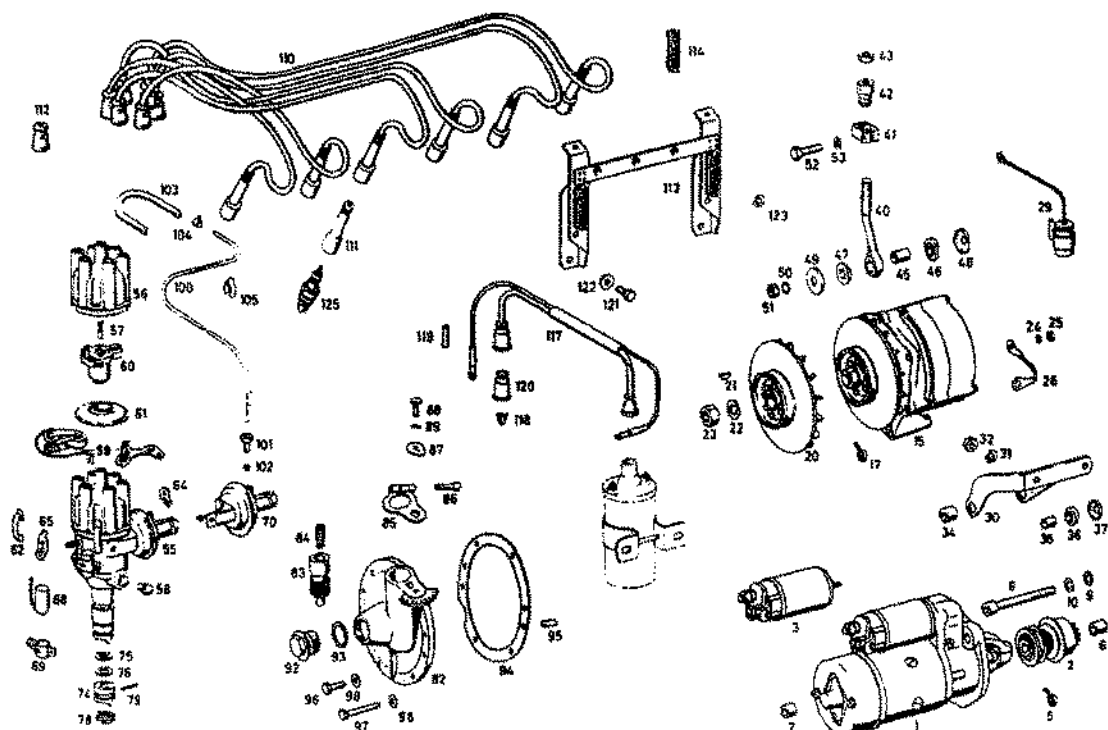


TABLE 18 OIL FILTER

M127 ENGINE

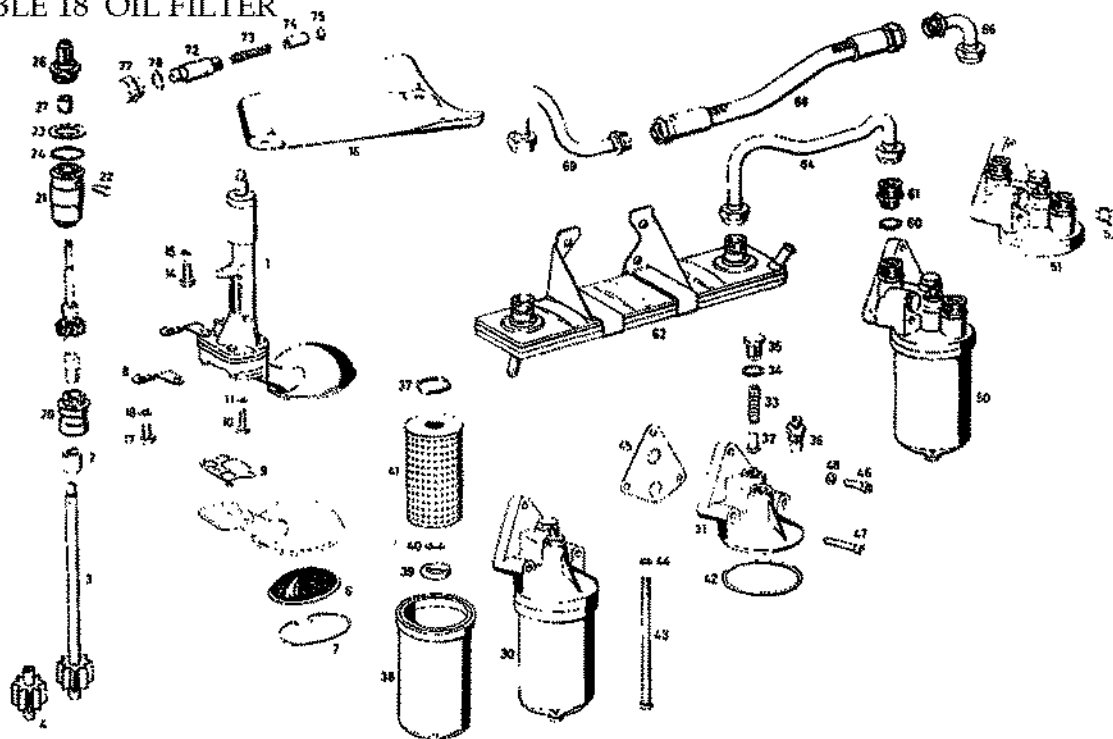
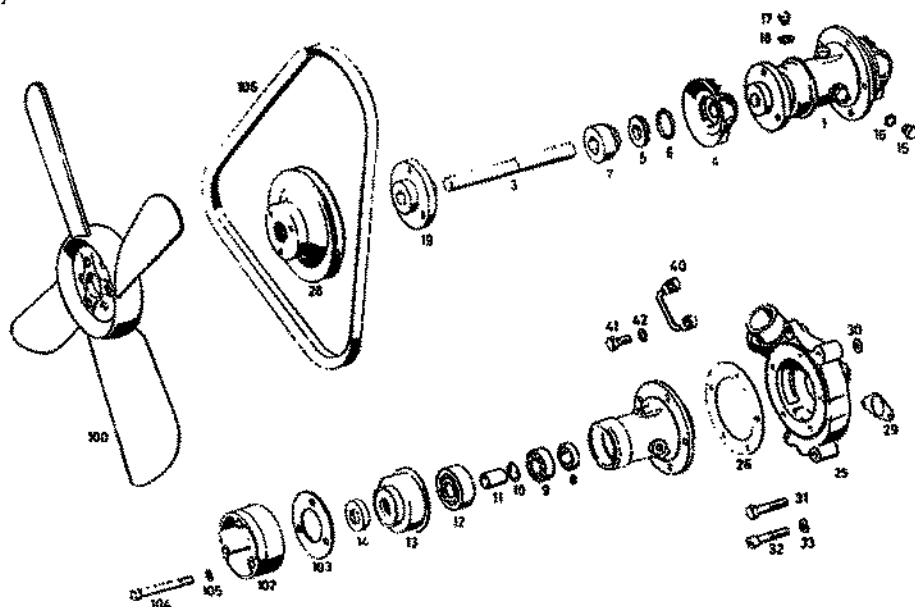


TABLE 20/1 ENGINE COOLING





# M127 ENGINE

TABLE 20/2 ENGINE COOLING

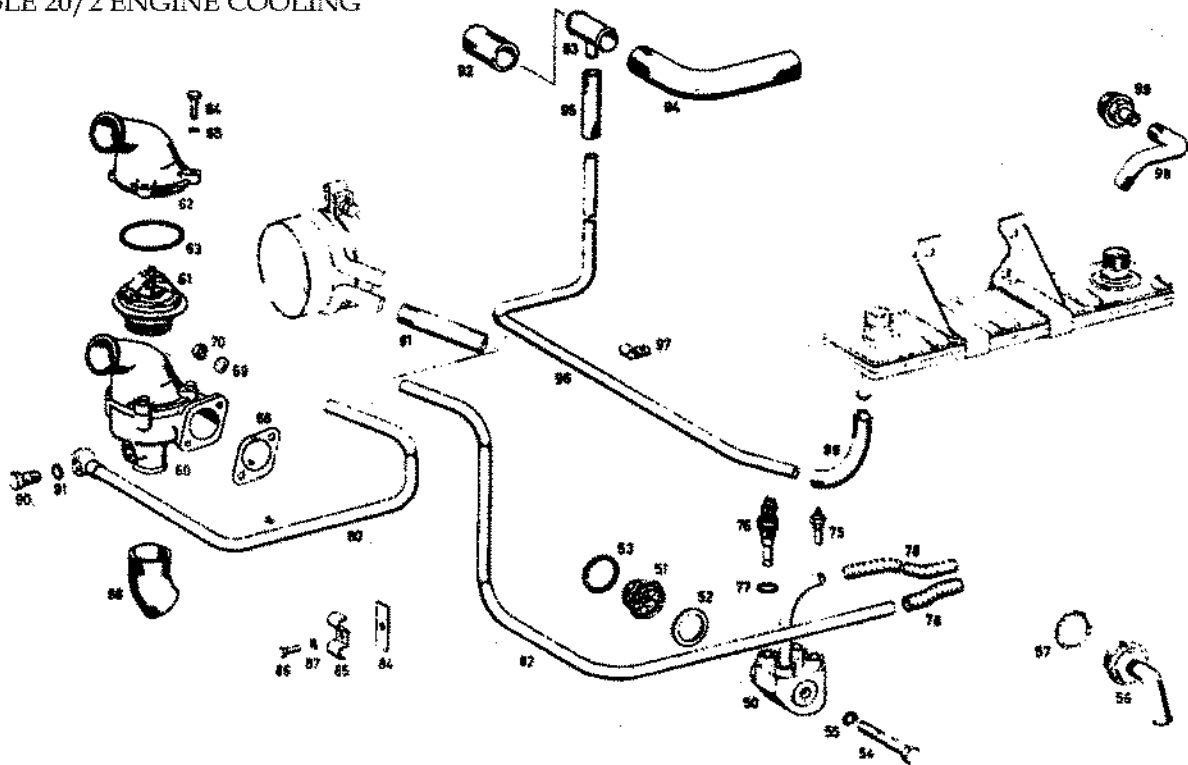


TABLE 25 CLUTCH

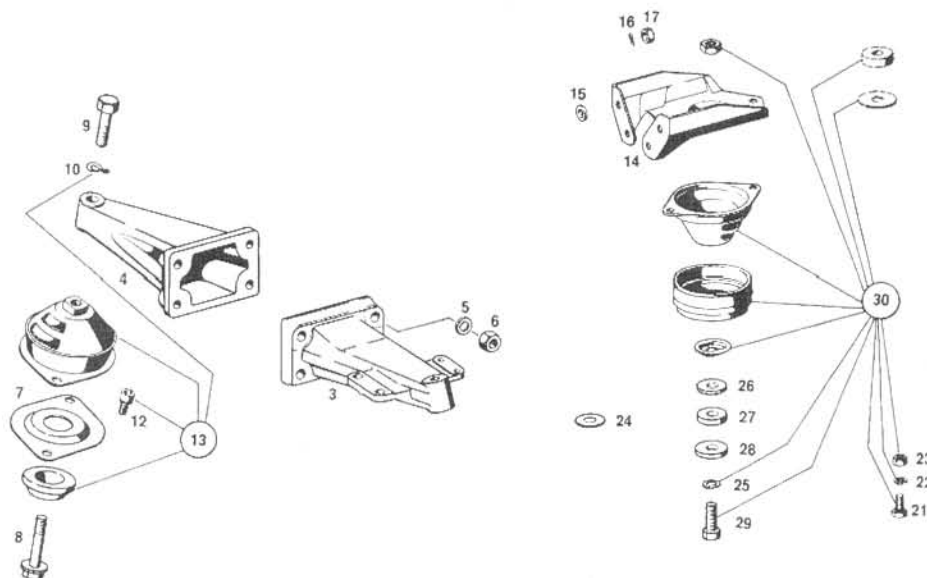
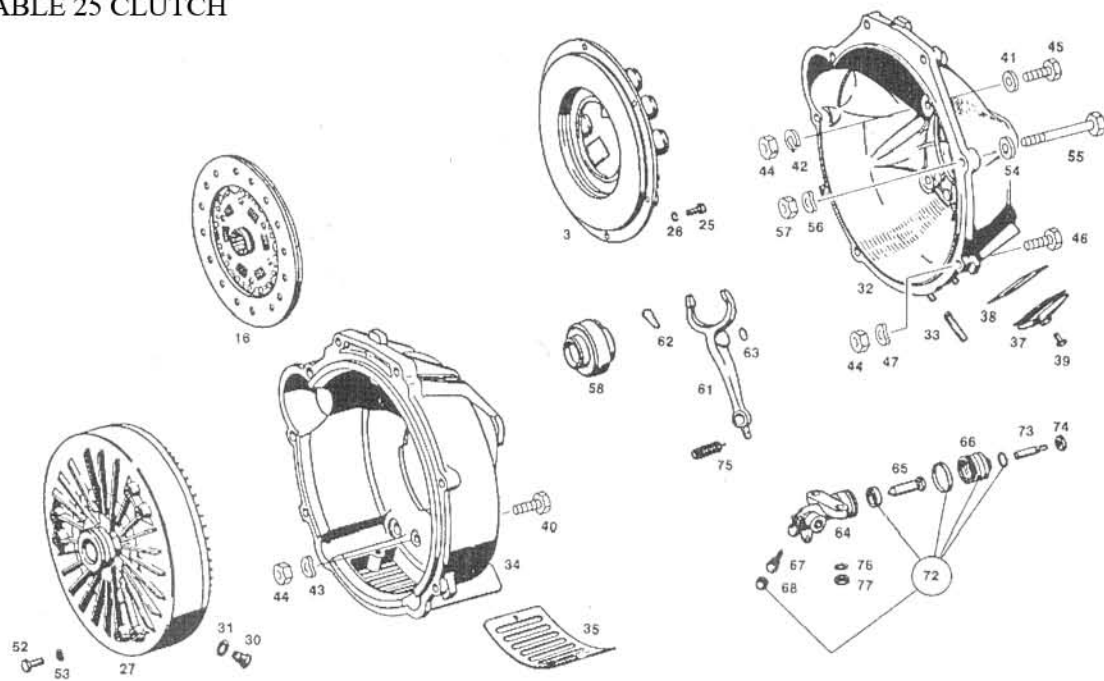


TABLE 25 CLUTCH



This diagram shows an exploded view of a mechanical assembly, likely a vehicle's rear suspension or steering component. The parts are numbered as follows:

- 238, 240, 242, 244, 246, 248, 250, 252
- 176, 174, 172, 178
- 216, 220, 222, 224, 226, 230, 232, 234
- 212, 214, 218, 228
- 196, 192, 180, 182, 184, 186, 188
- 166, 168
- 204, 202, 198, 206, 208, 210
- 286, 285, 290, 292, 294, 296
- 274, 272, 270, 264, 268, 262, 260, 258, 276, 310, 298, 256
- 308, 306, 302, 300, 304

TABLE 27/1 AUTOMATIC TRANSMISSION

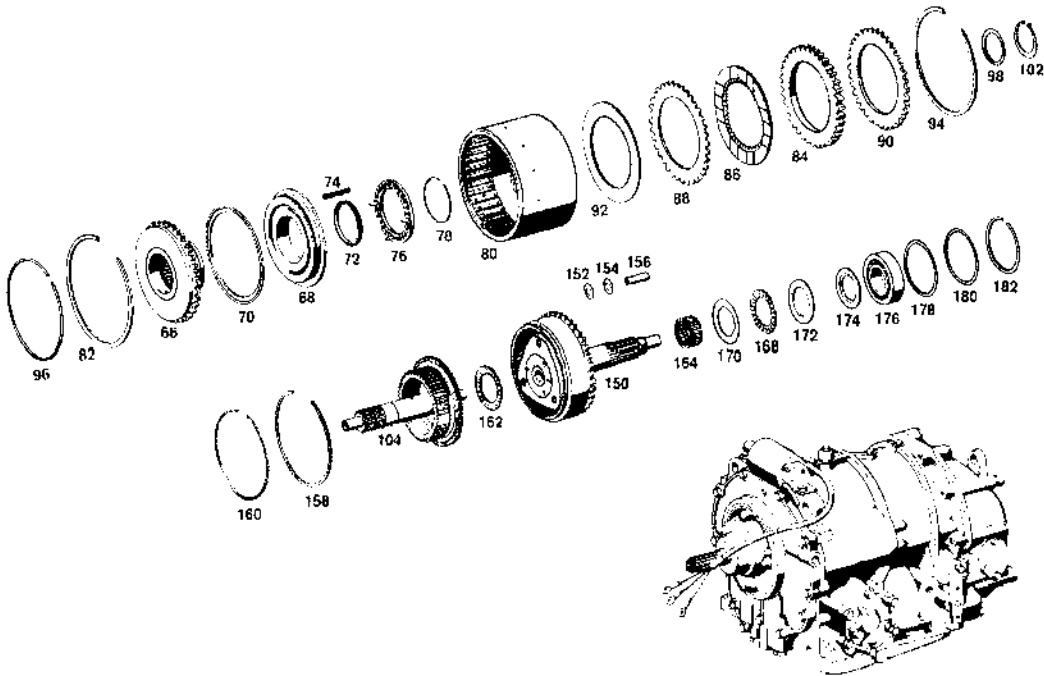


TABLE 27/2 AUTOMATIC TRANSMISSION

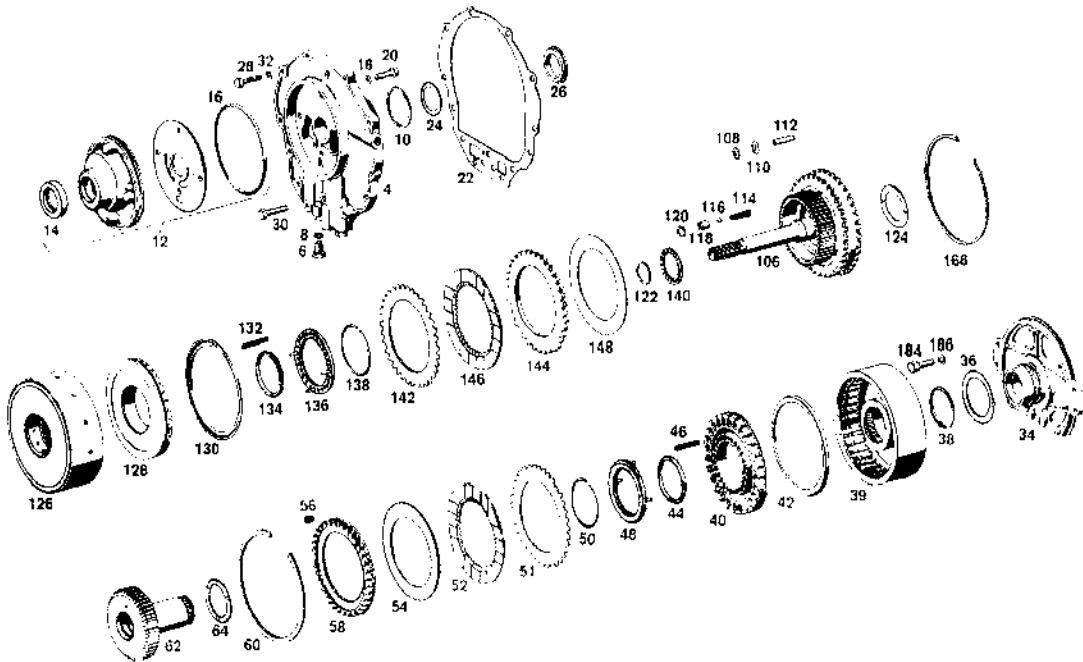


TABLE 27/3 AUTOMATIC TRANSMISSION

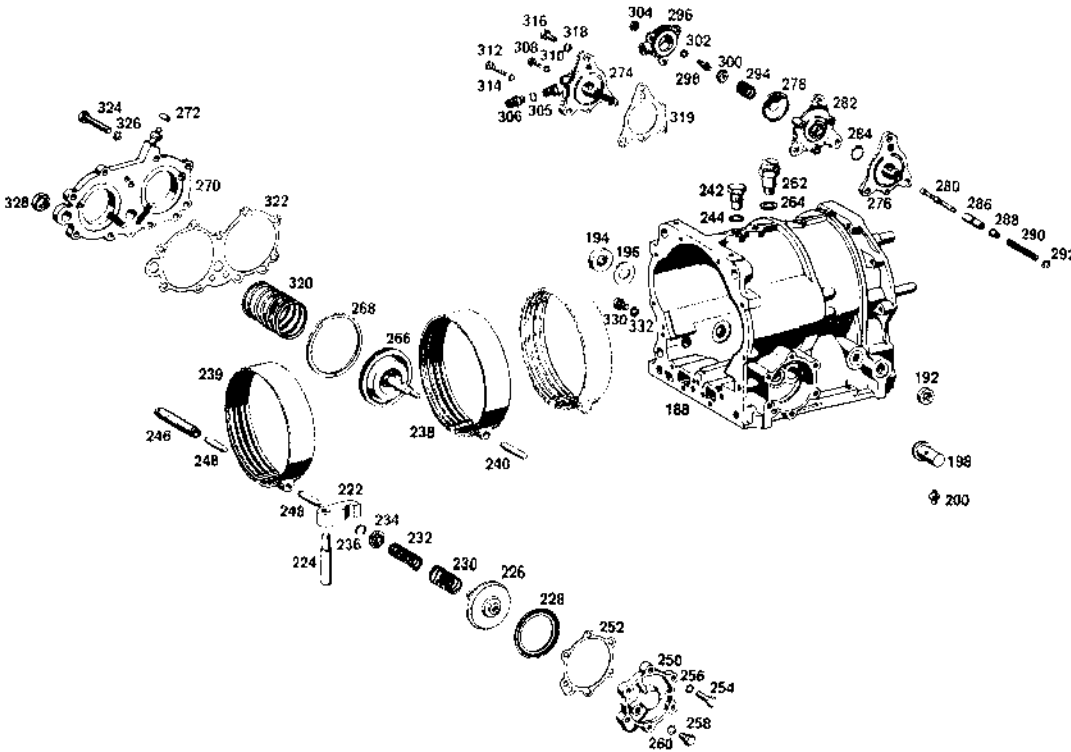


TABLE 27/4 AUTOMATIC TRANSMISSION

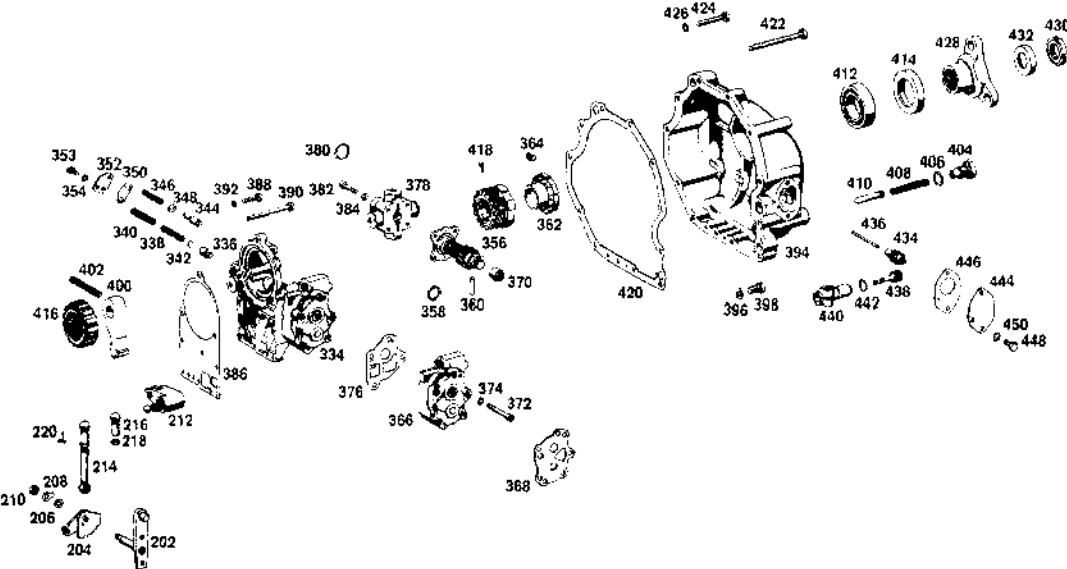


TABLE 26/5 AUTOMATIC TRANSMISSION

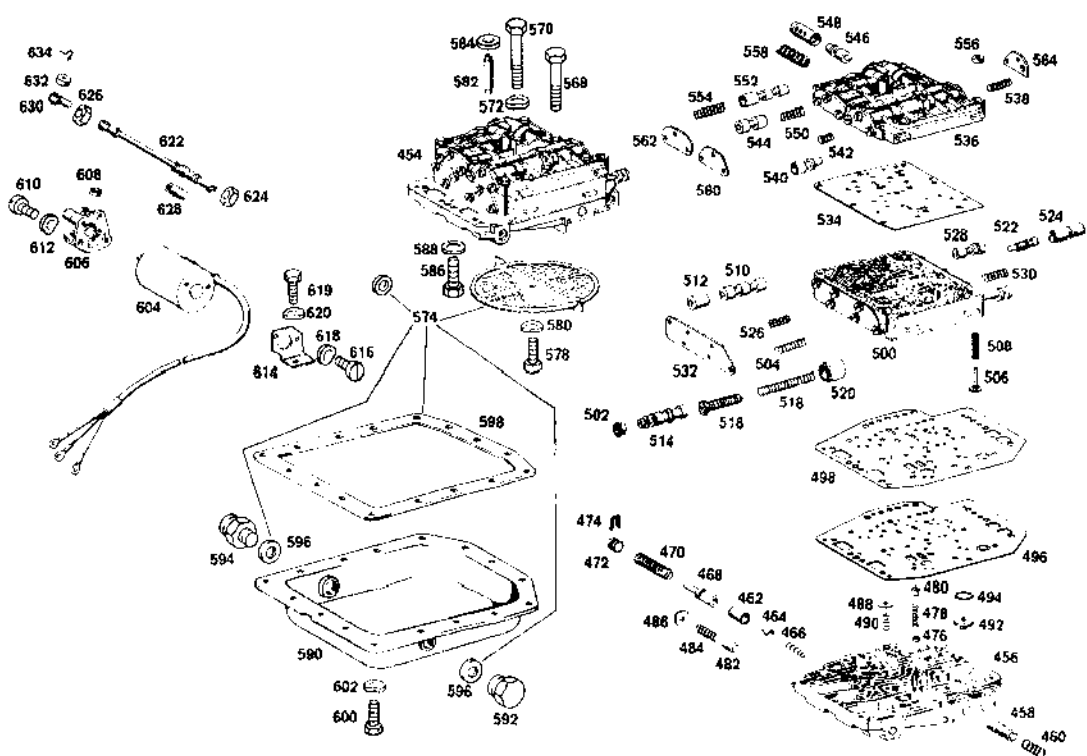


TABLE 26/6 AUTOMATIC TRANSMISSION

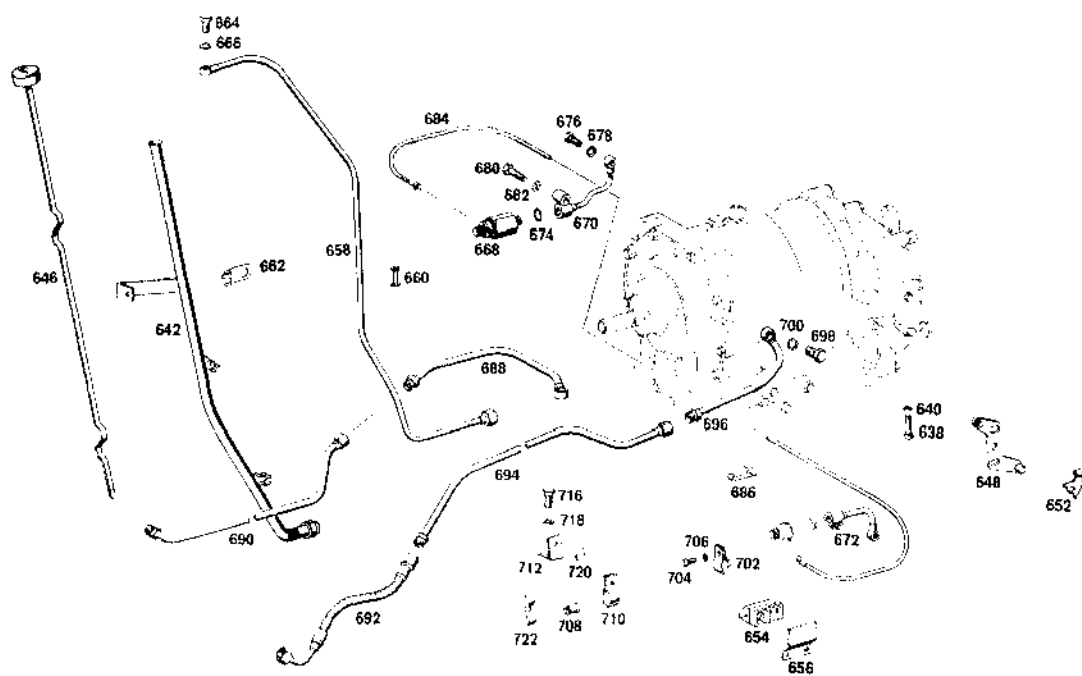


TABLE 27/7 AUTOMATIC TRANSMISSION

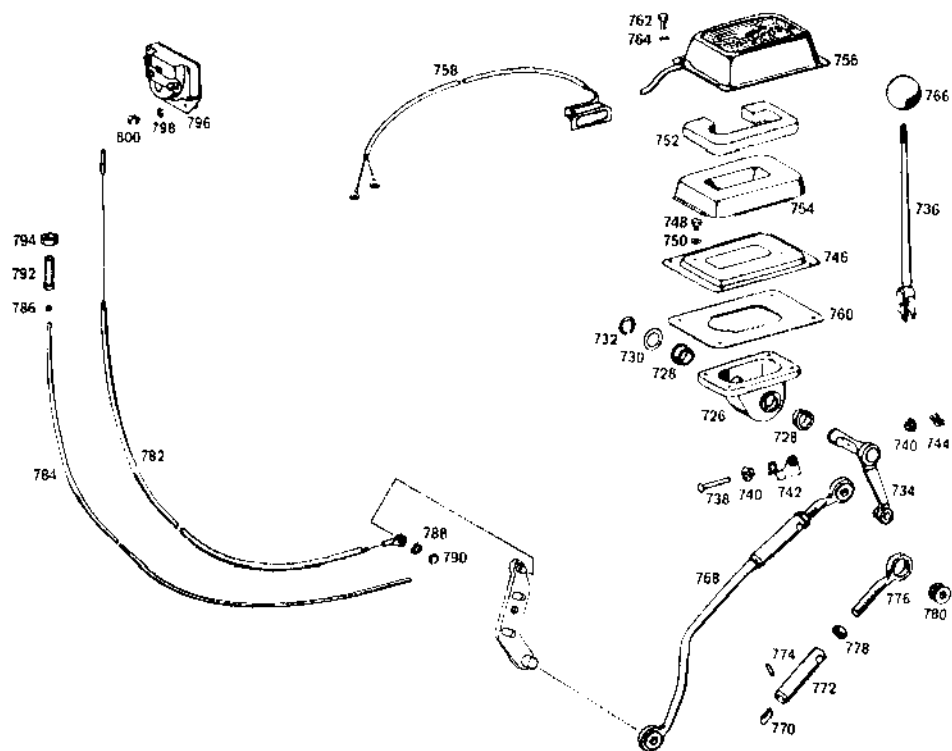


TABLE 29 BRAKE & CLUTCH PEDALS

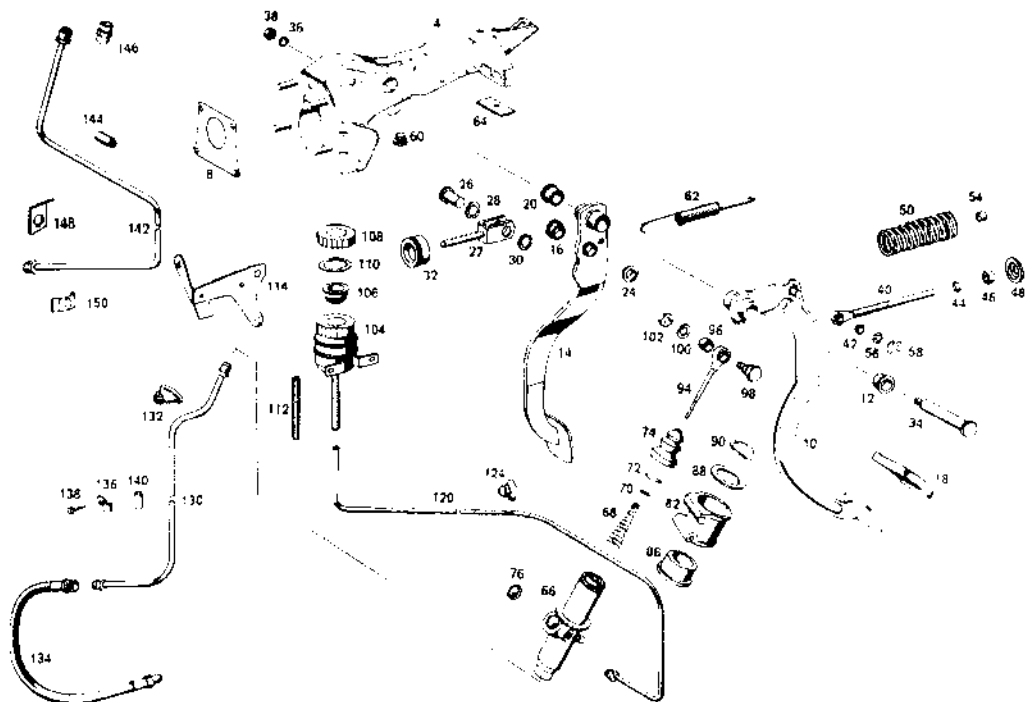


TABLE 30 ACCELERATOR LINKAGE

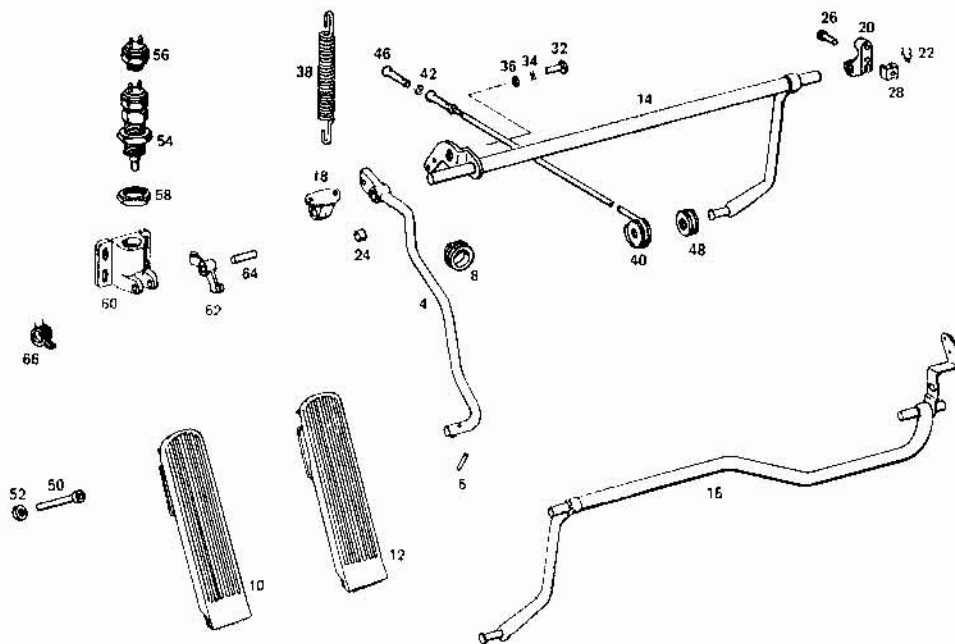


TABLE 32 SUSPENSION

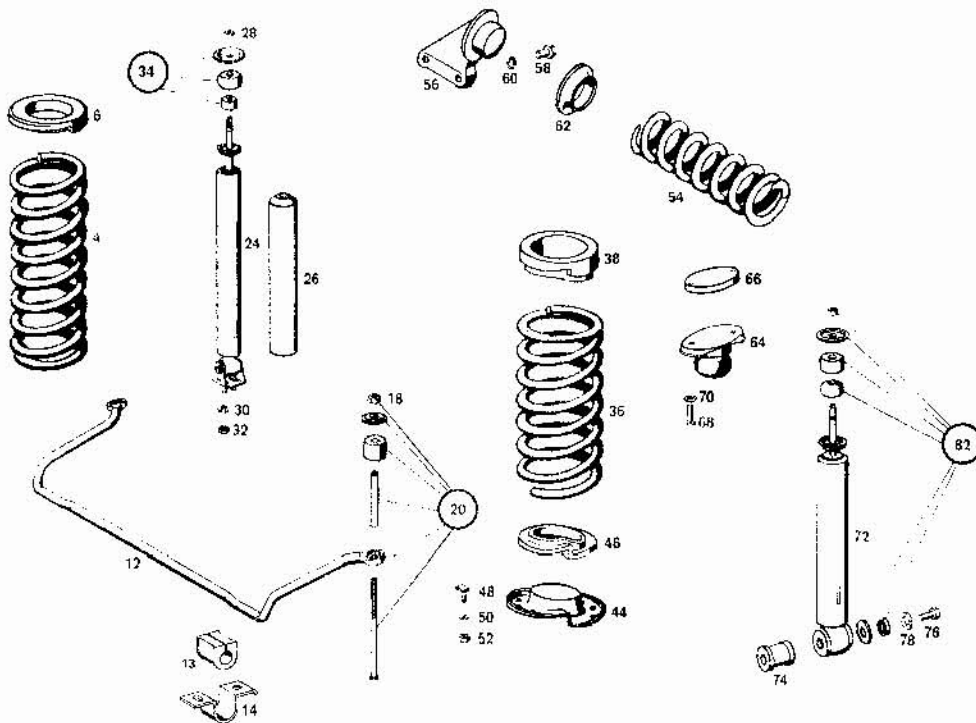




TABLE 33/1 FRONT AXLE

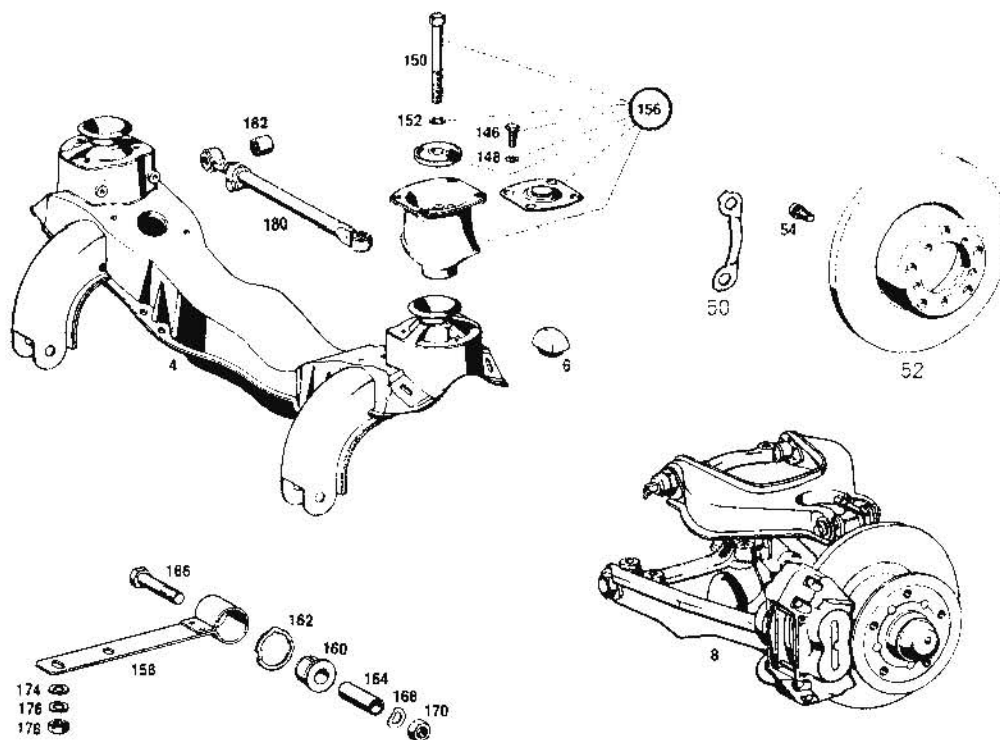


TABLE 33/2 FRONT AXLE

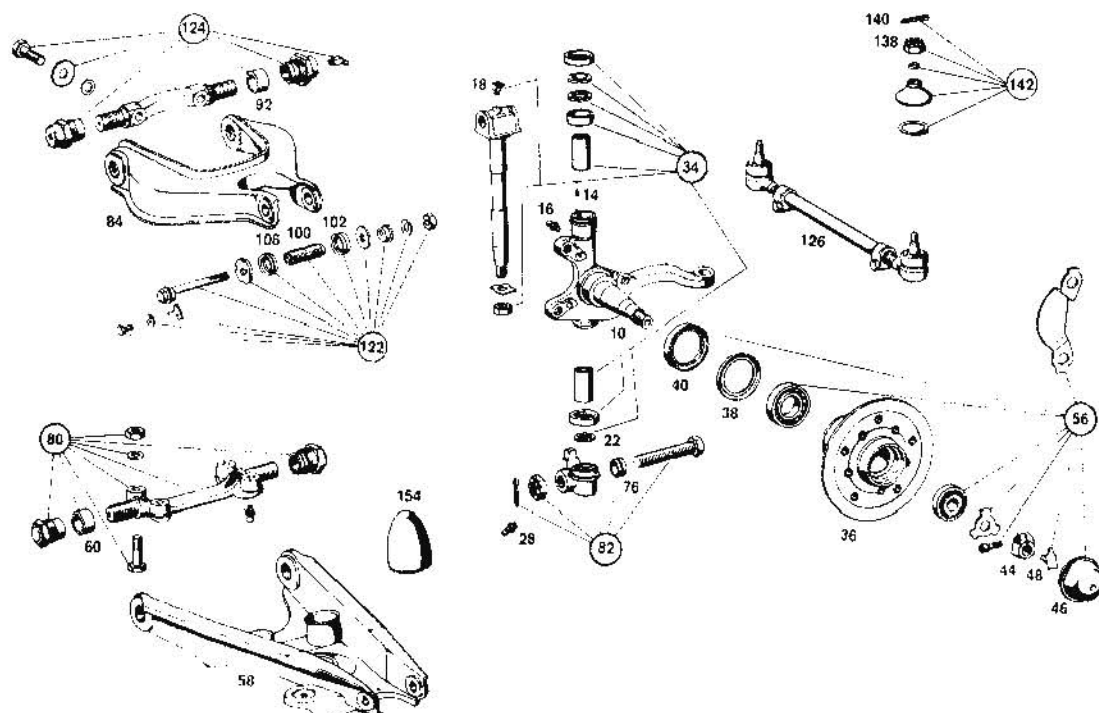


TABLE 35/1 REAR AXLE

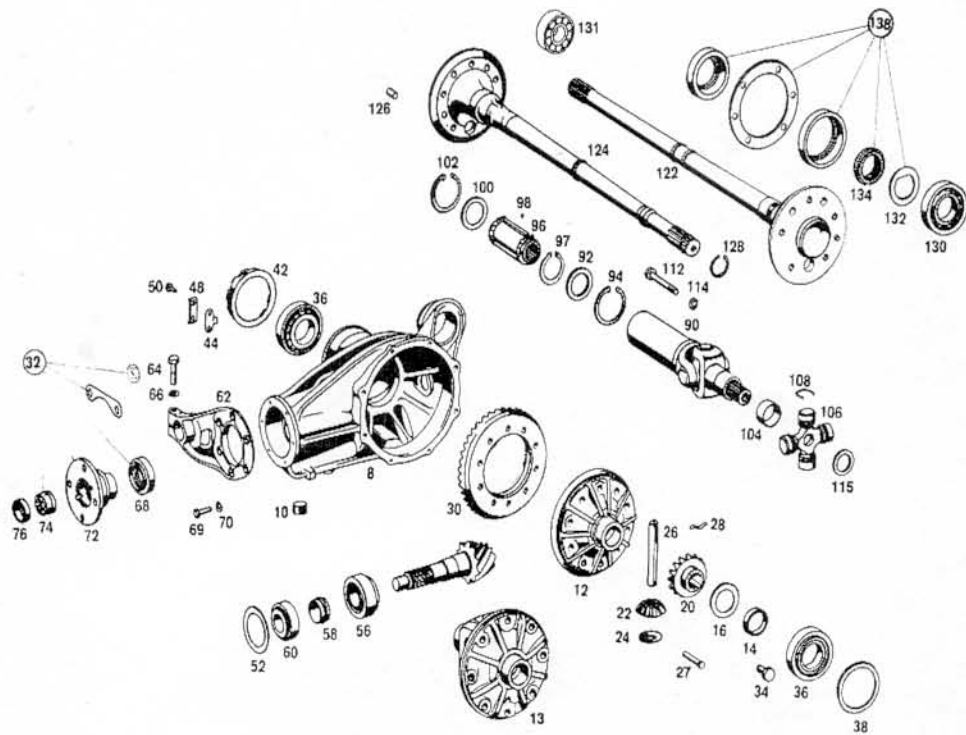


TABLE 35/2 REAR AXLE

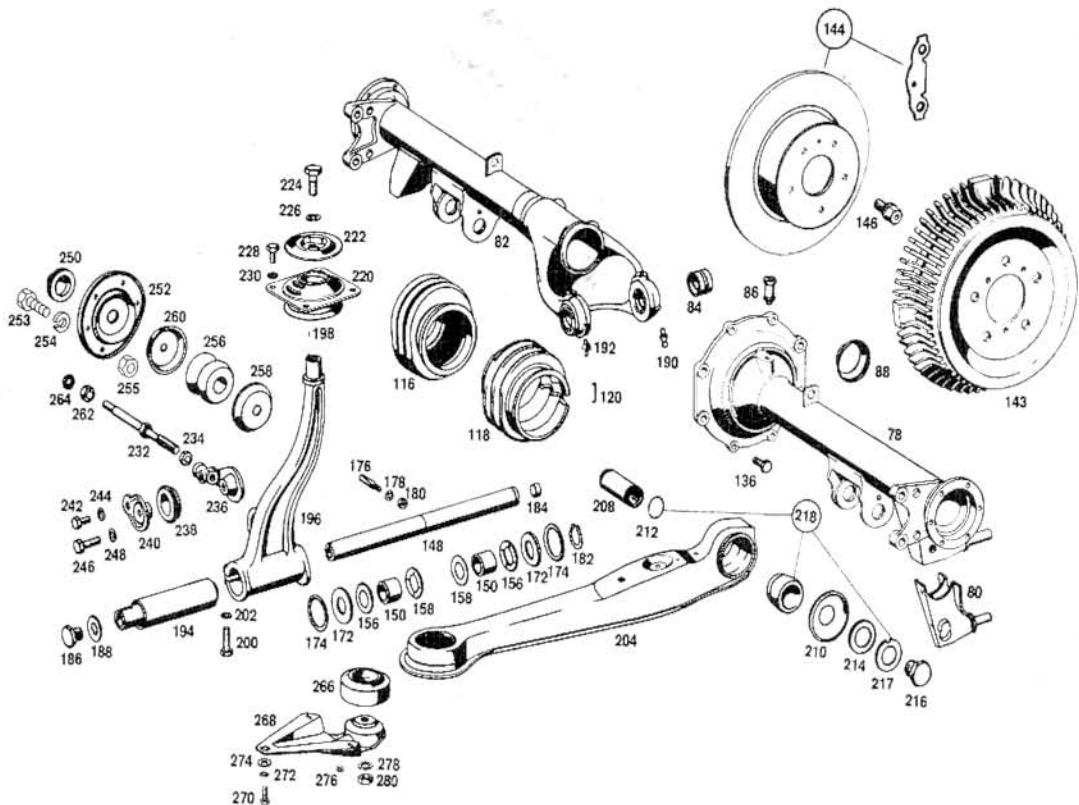


TABLE 40 WHEELS

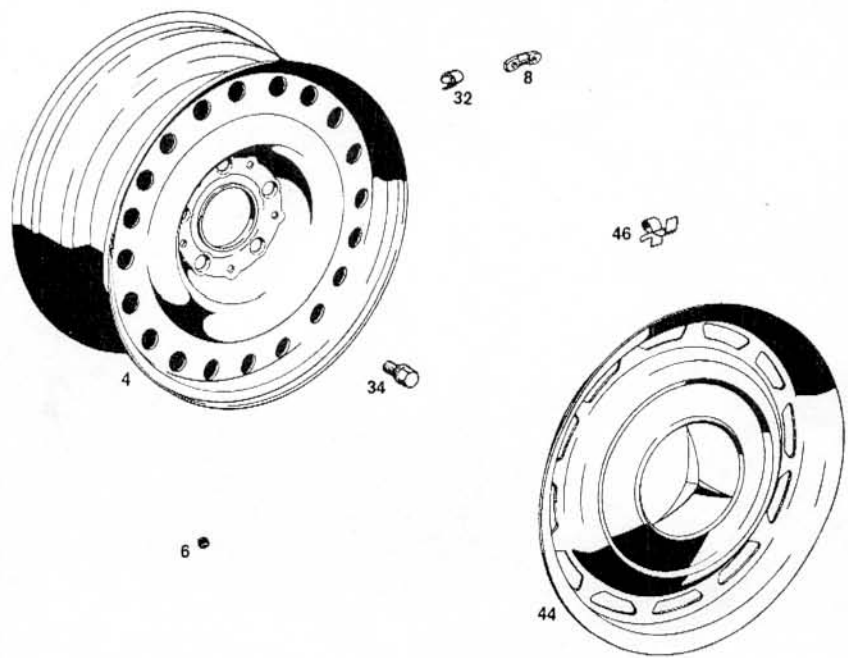


TABLE 41 PROPSHAFT

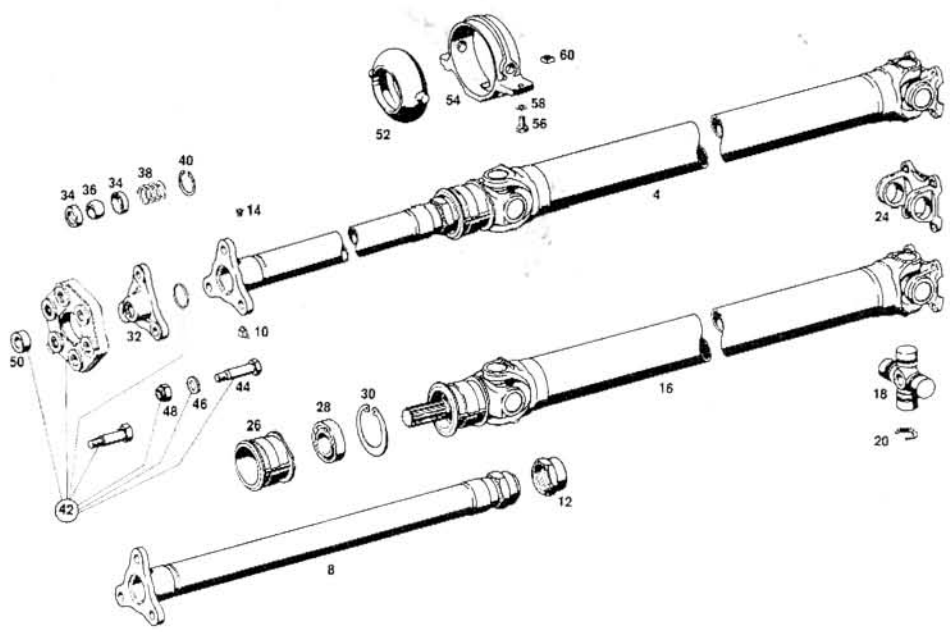


TABLE 42/1 FRONT WHEEL BRAKES

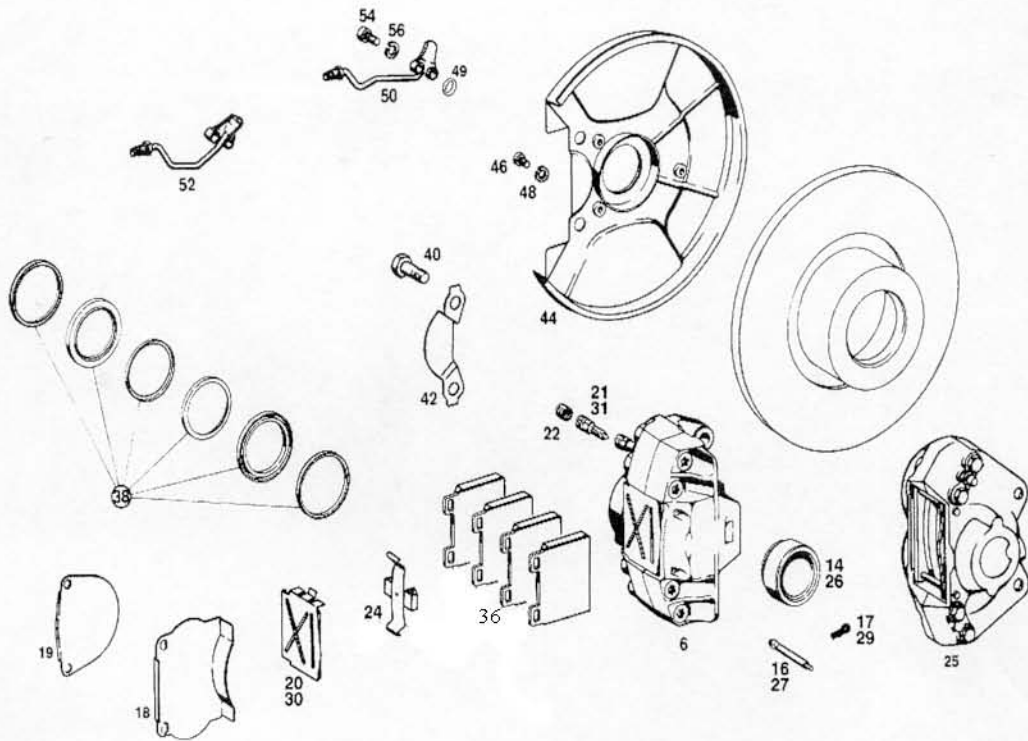


TABLE 42/2A REAR WHEEL BRAKES 230SL

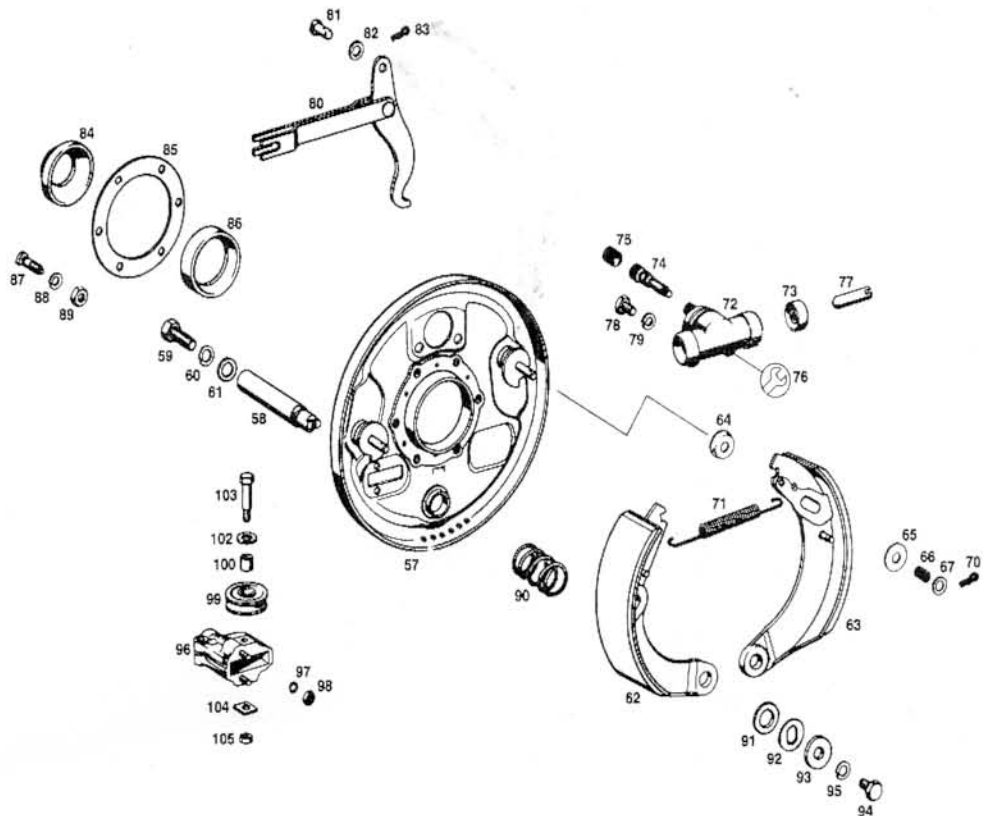


TABLE 42/2B REAR WHEEL BRAKES 250-280SL

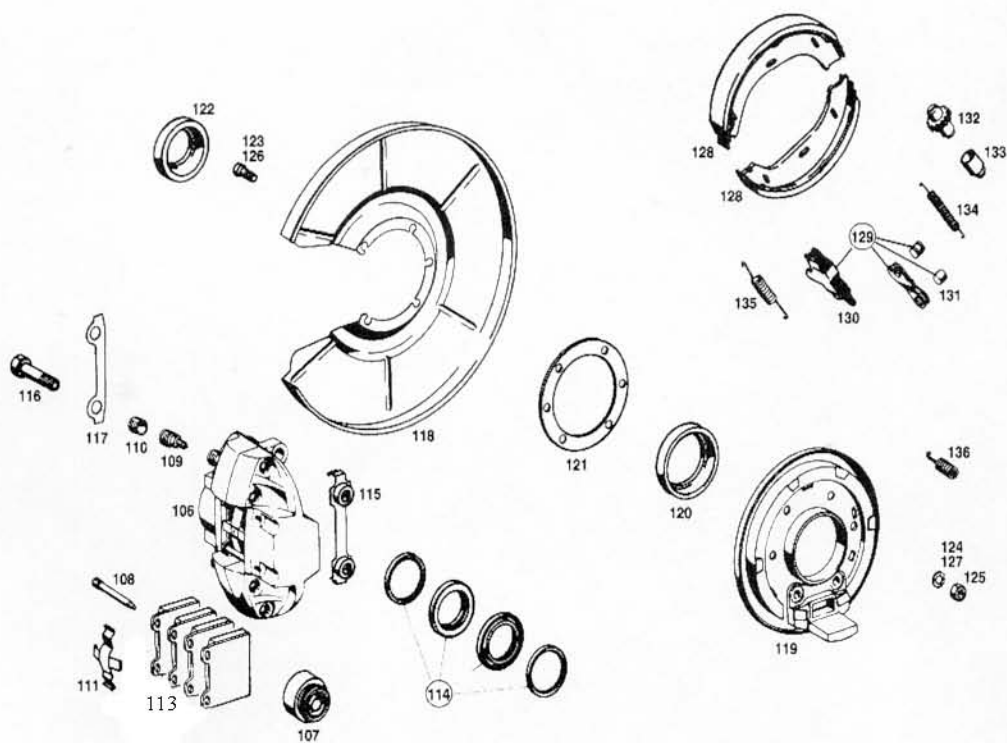


TABLE 42/3 BRAKE SERVO, MASTER CYLINDER AND LINES

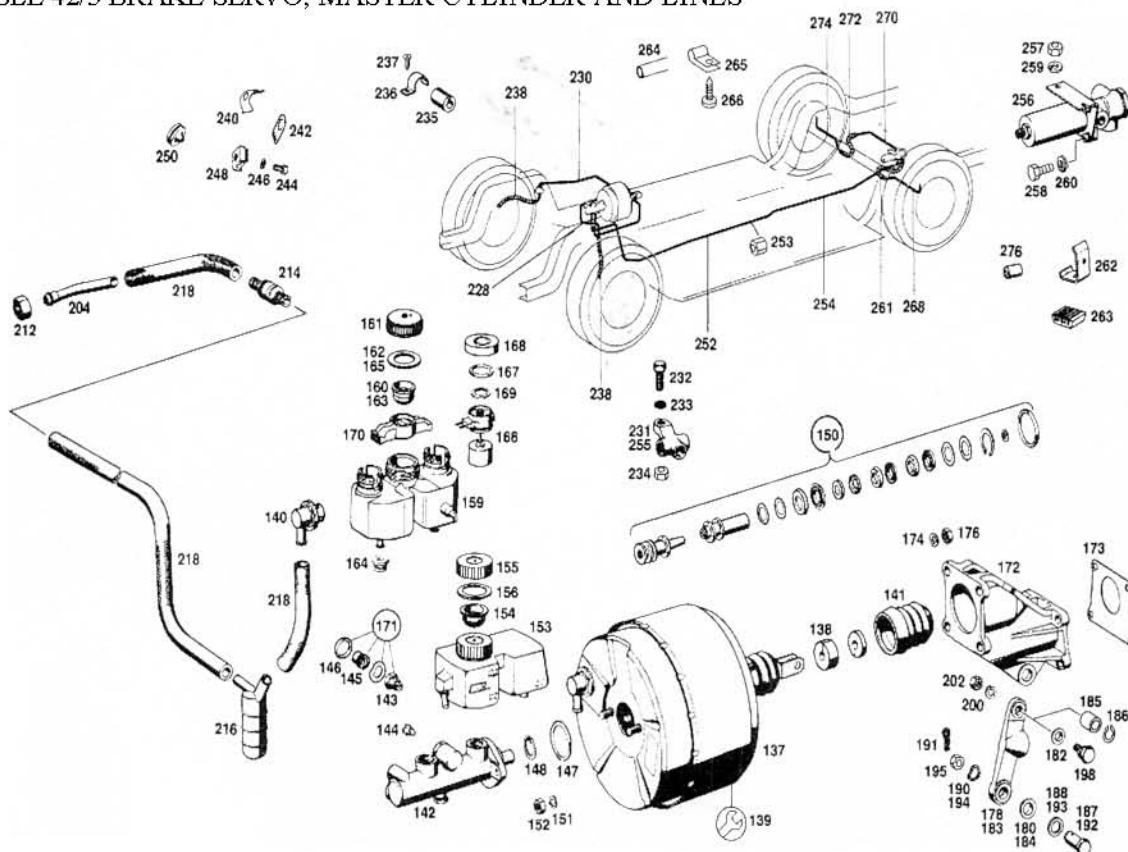


TABLE 42/4 HANDBRAKE

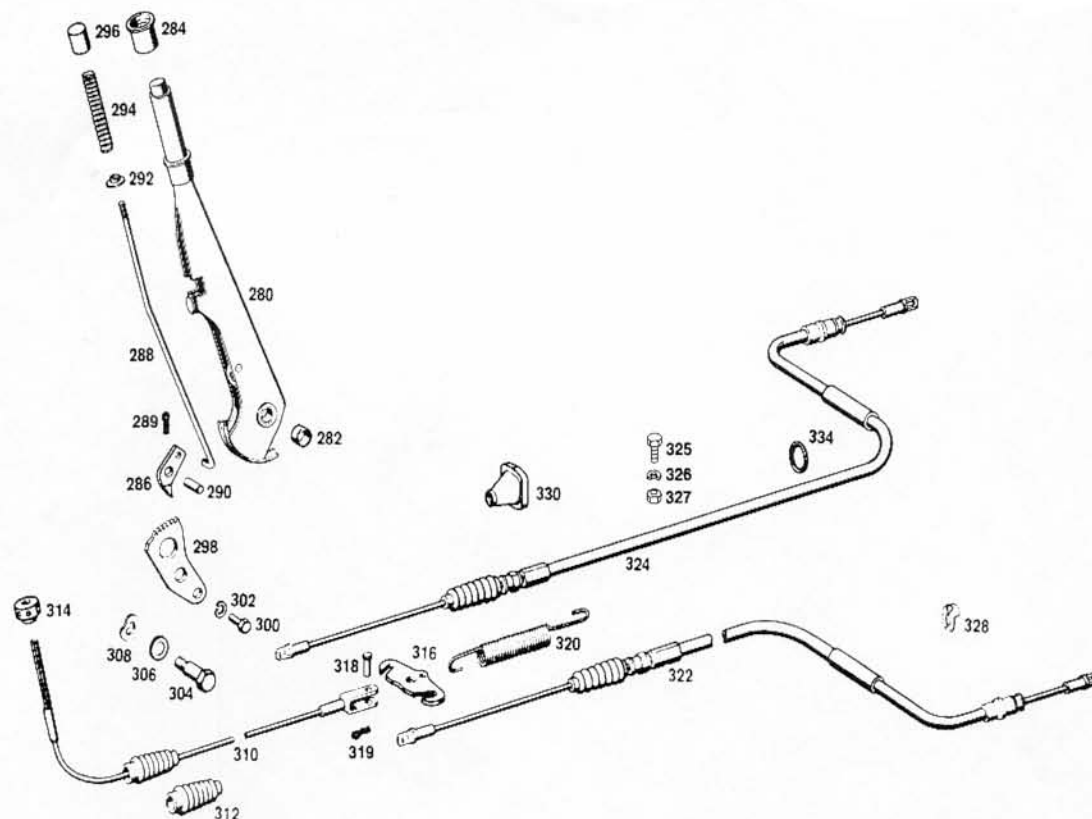


TABLE 46/1 STEERING LINKAGE AND MANUAL STEERING BOX

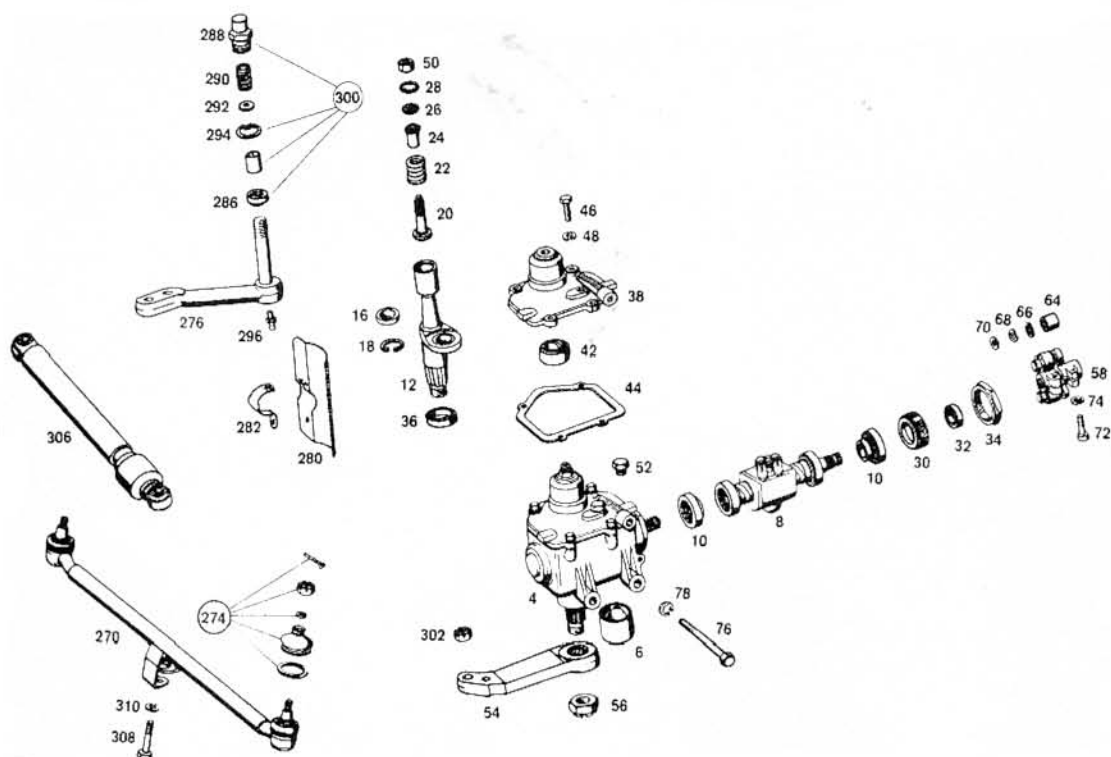


TABLE 46/3 STEERING WHEEL &amp; COLUMN - LATE VERSION

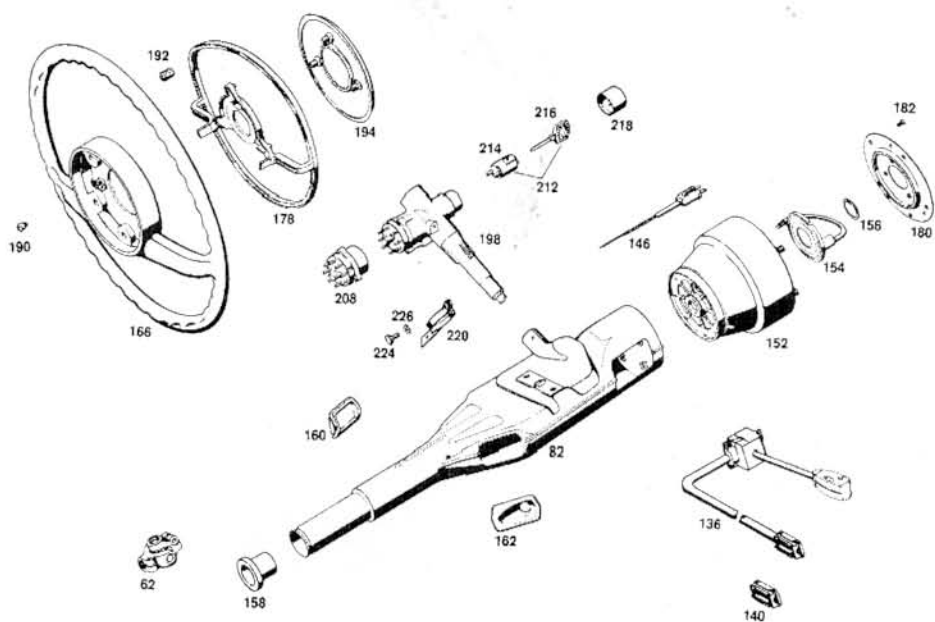


TABLE 46/4 POWER STEERING BOX

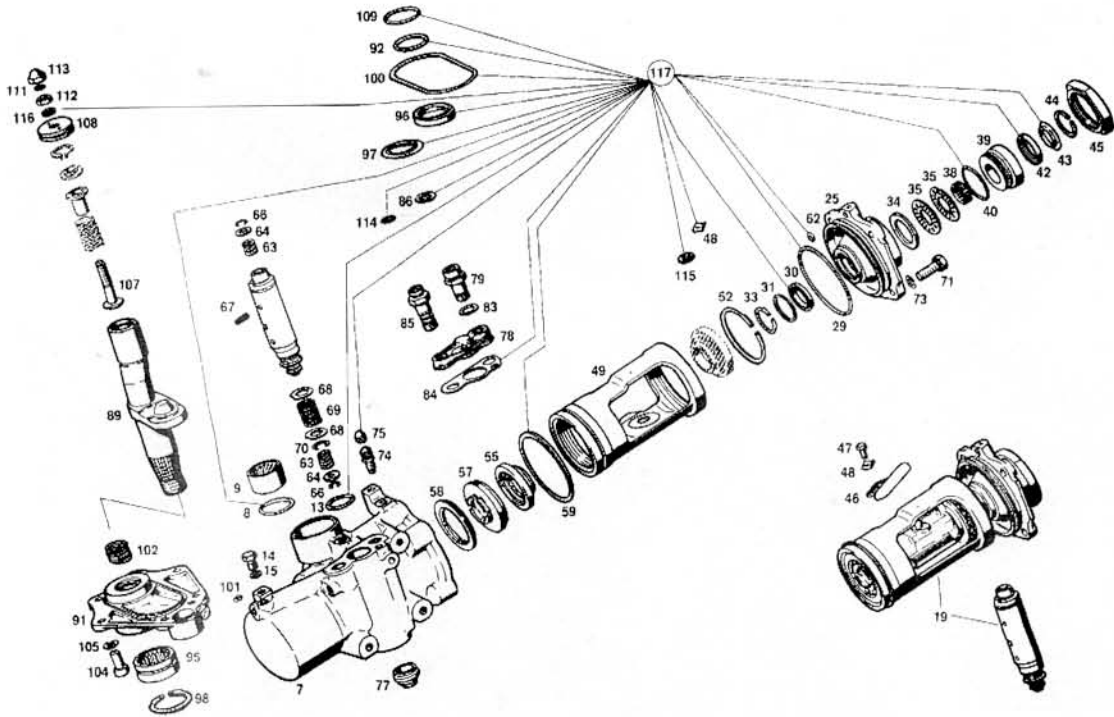


TABLE 46/5 POWER STEERING PUMP

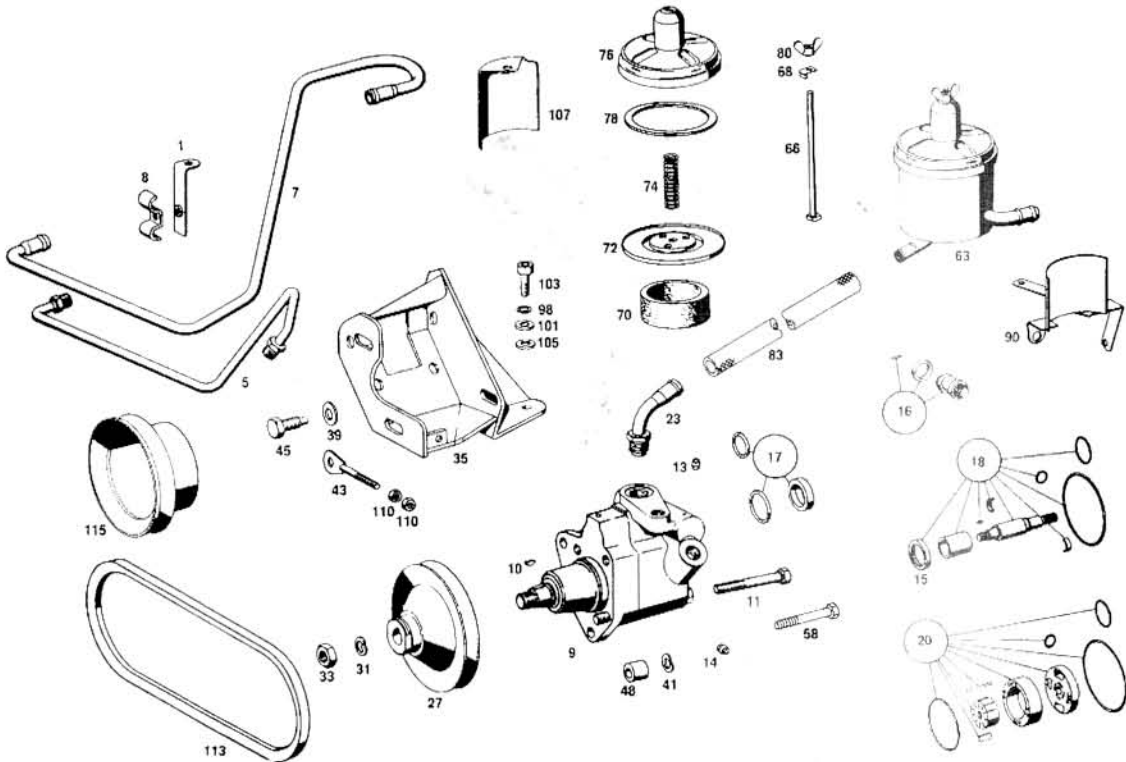




TABLE 47/1 FUEL TANK

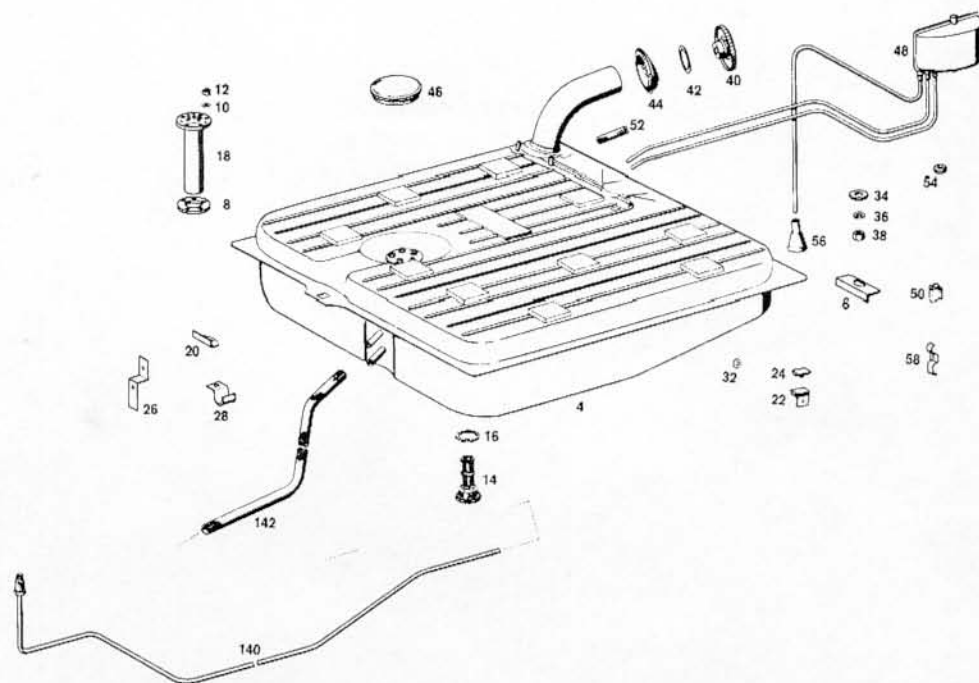


TABLE 47/2 FUEL PUMP

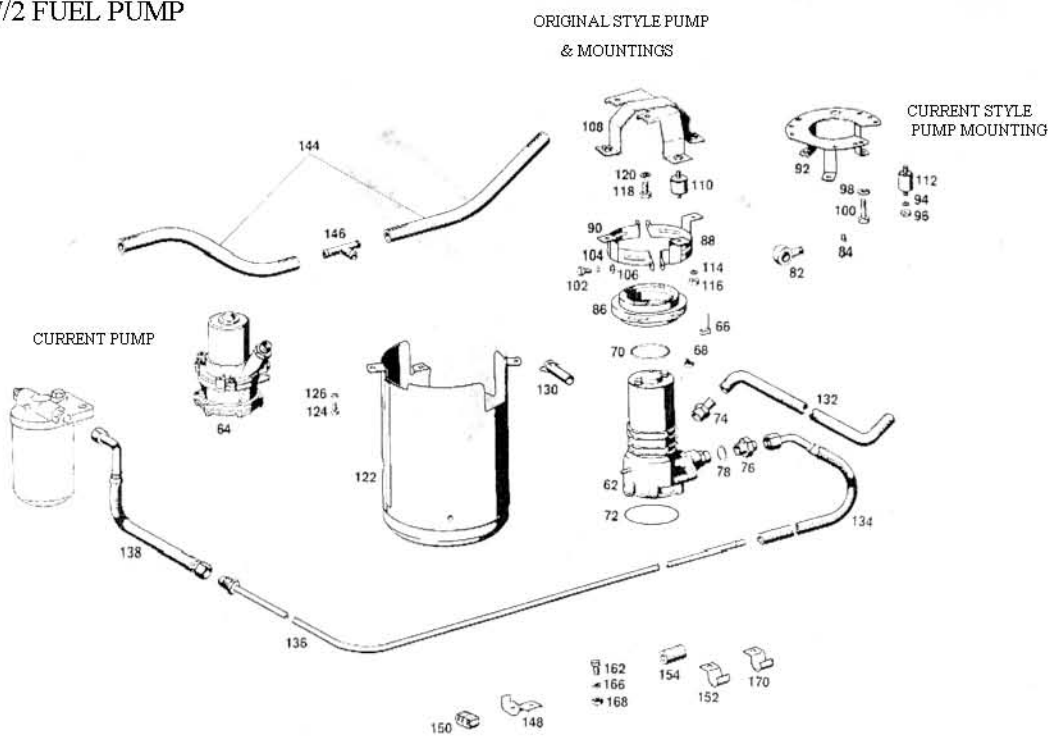


TABLE 49/1 EXHAUST FRONT PIPES

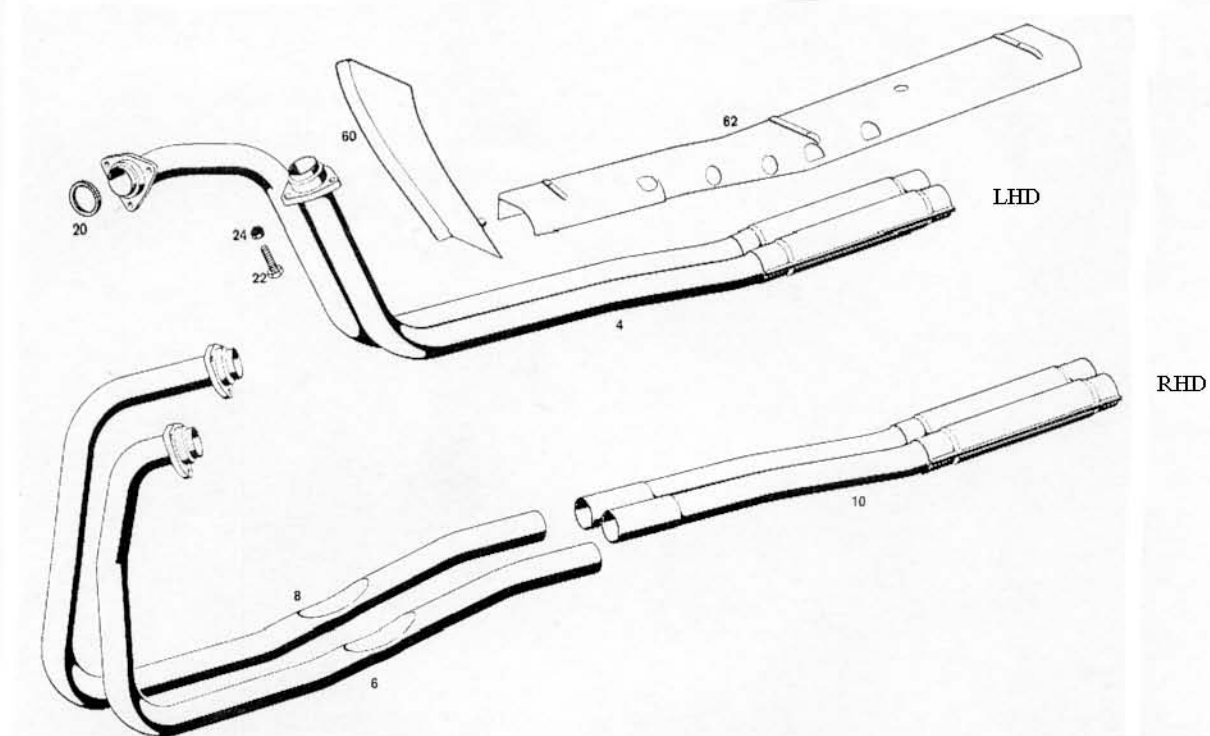


TABLE 49/2 EXHAUST REAR PIPES

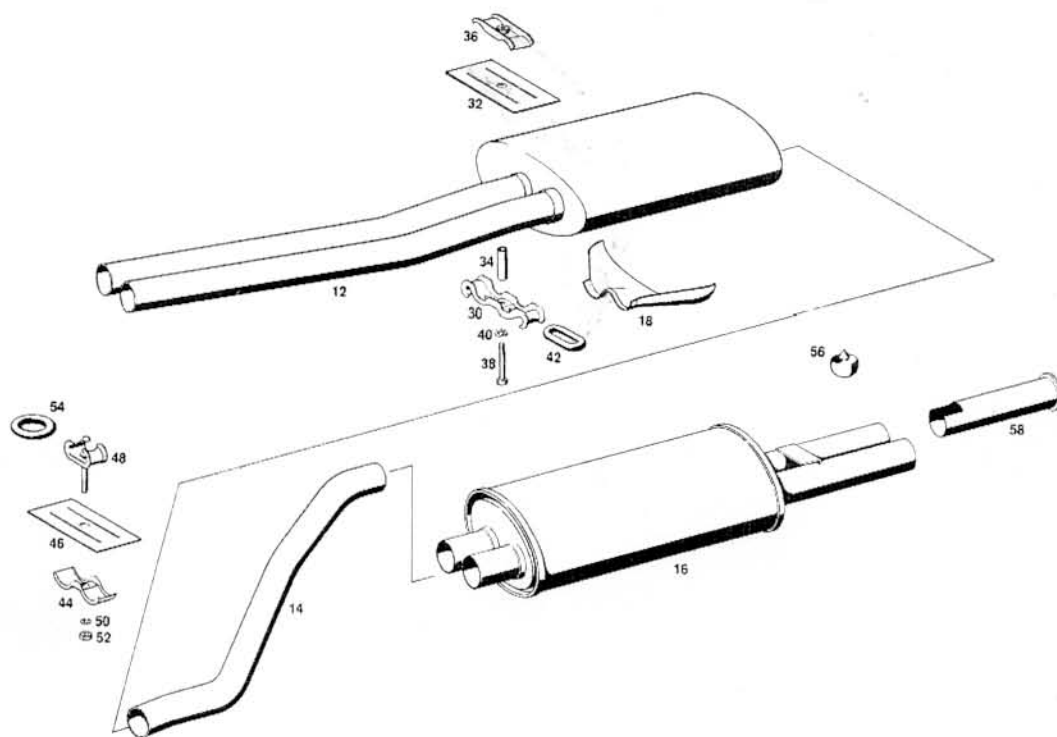


TABLE 50 RADIATOR &amp; HOSES

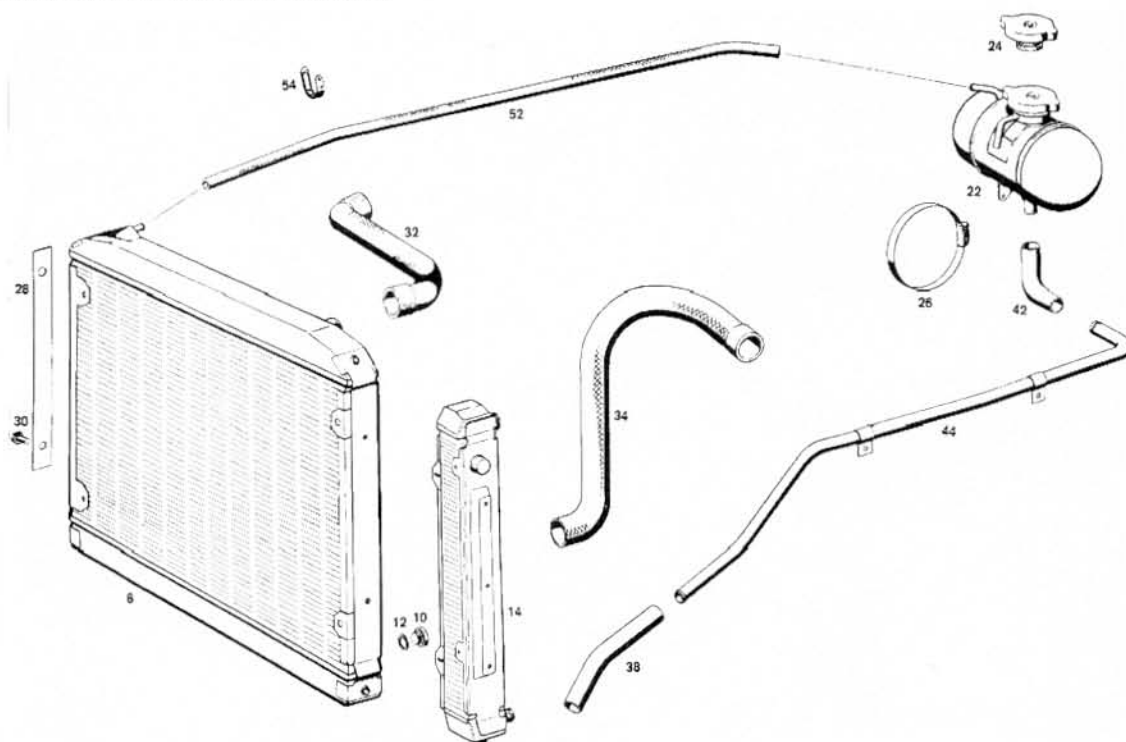


TABLE 54/1 ELECTRICS

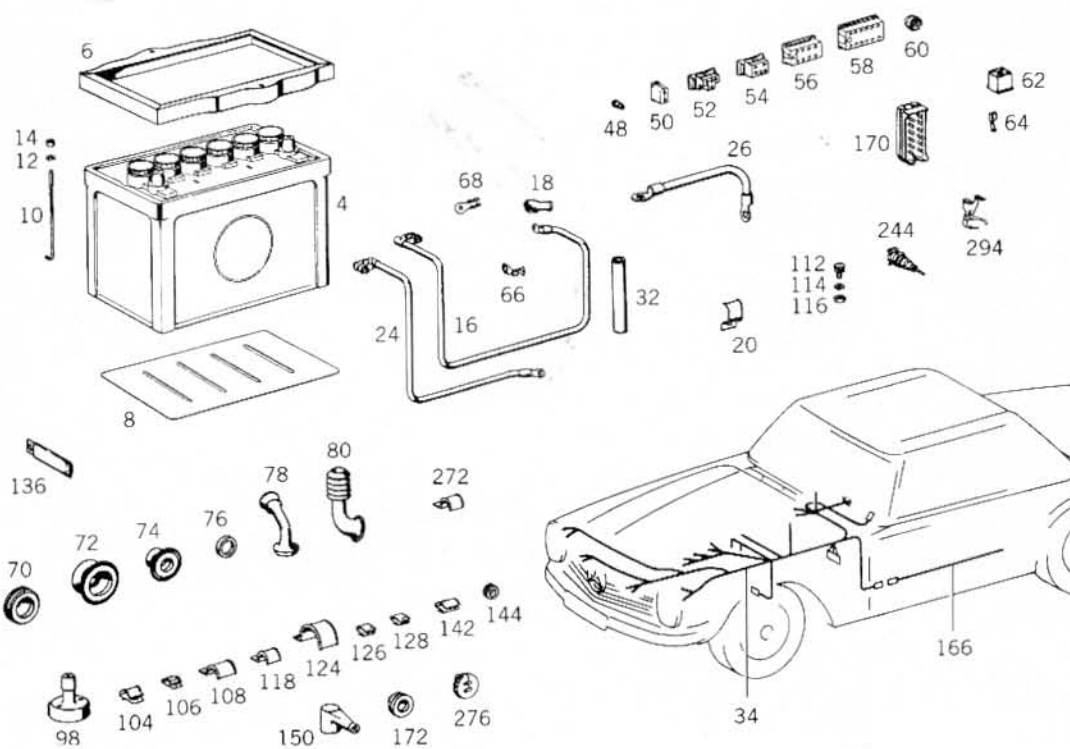


TABLE 54/2 ELECTRICS

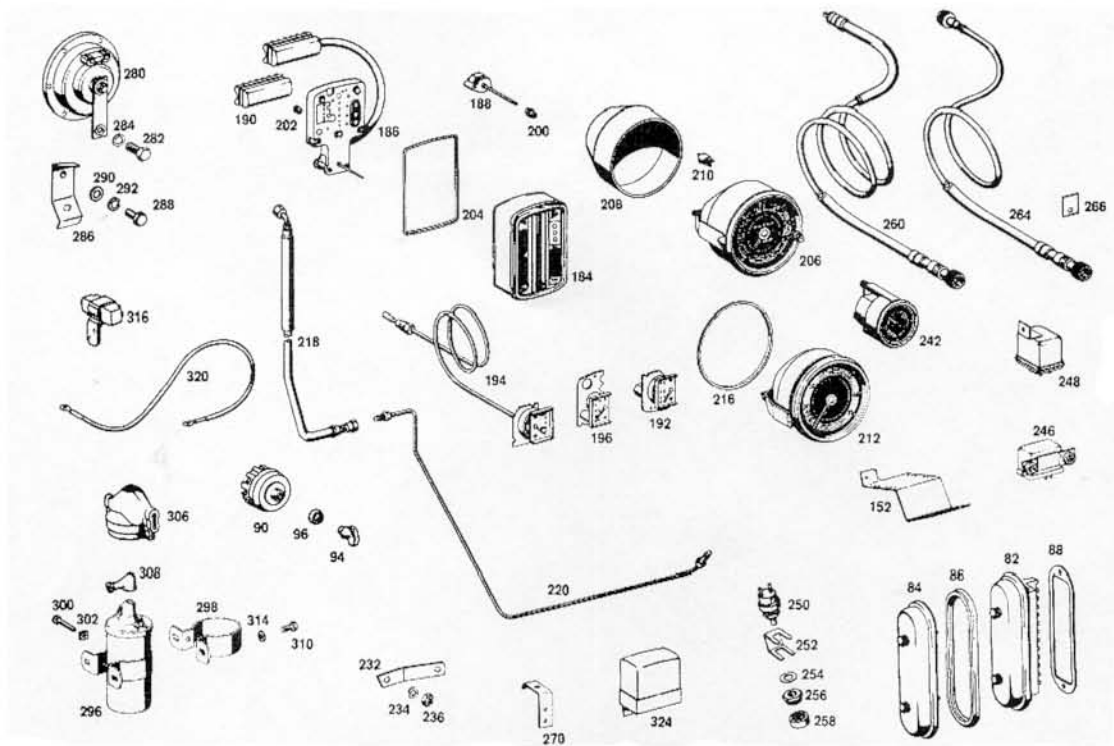


TABLE 58 TOOLS

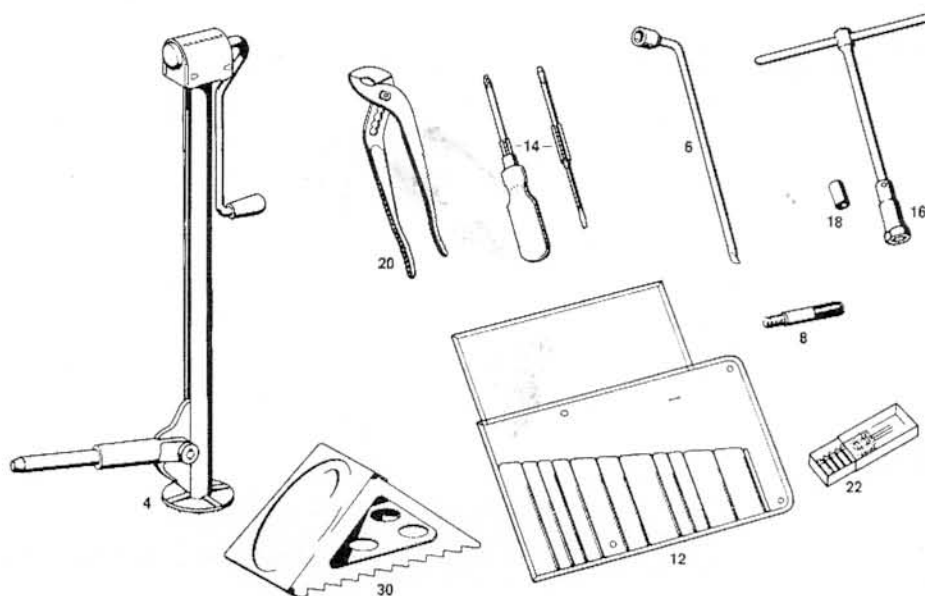


TABLE 61/1 CHASSIS & BOOT FLOOR

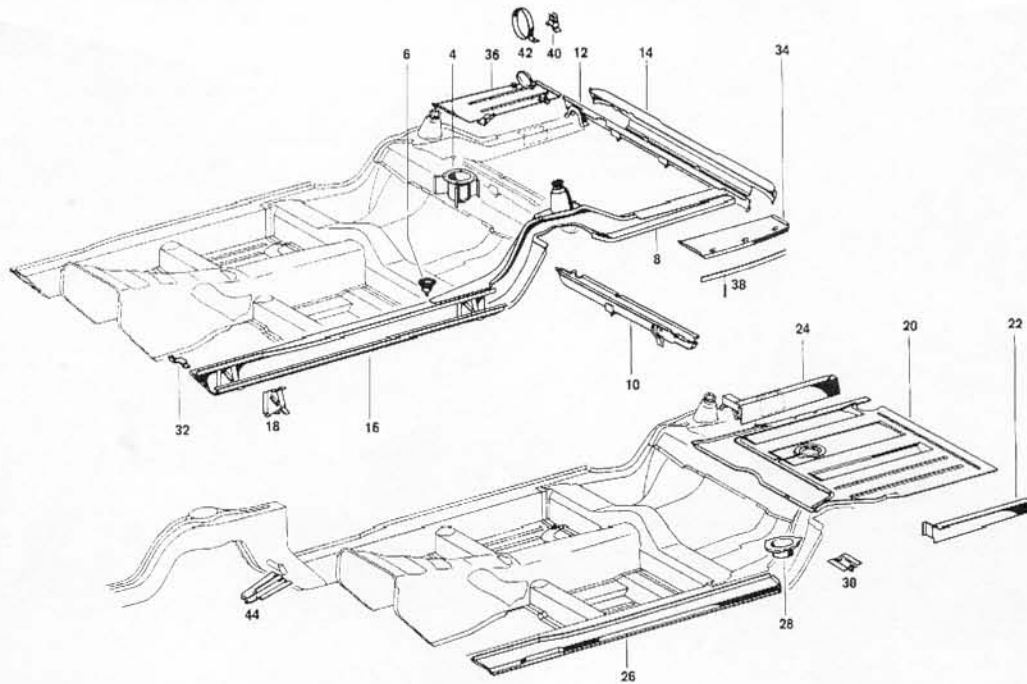


TABLE 61/2 FLOOR PANELS

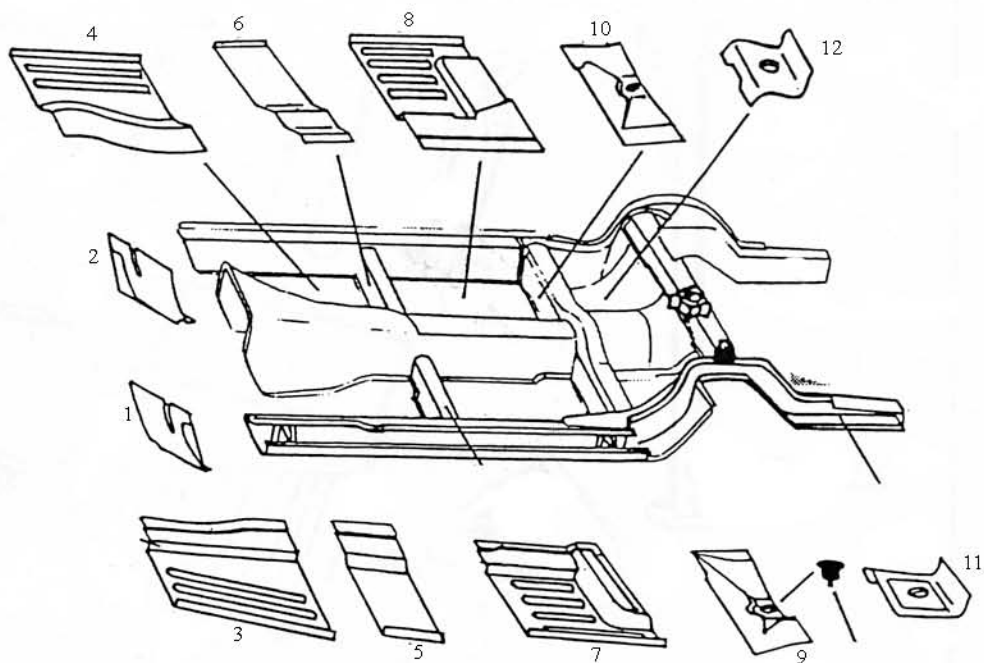


TABLE 62/1 FRONT PANELS

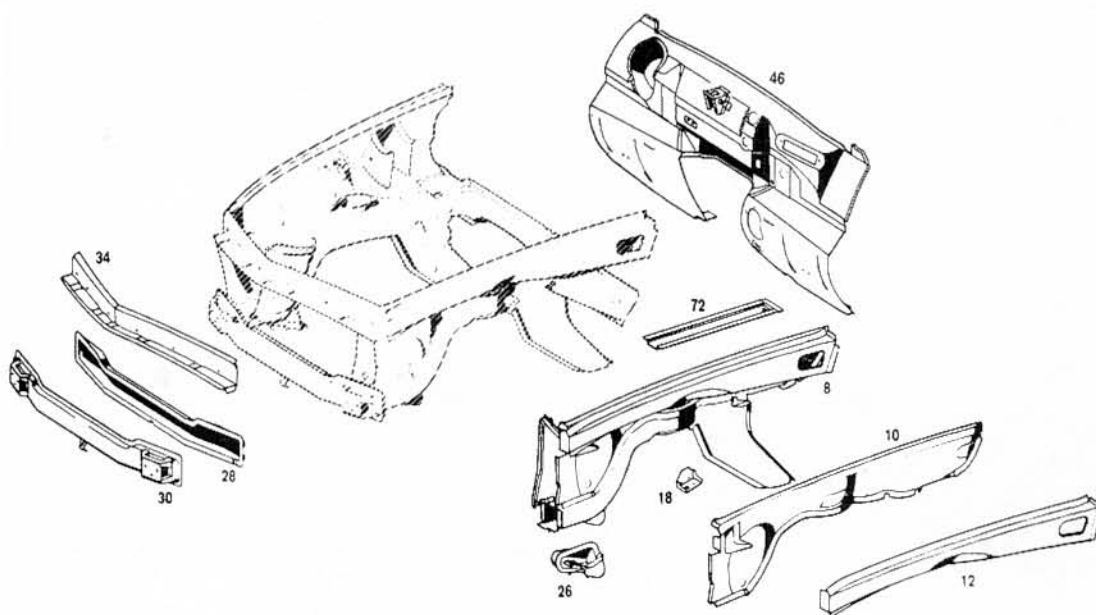


TABLE 62/2 FRONT PANELS

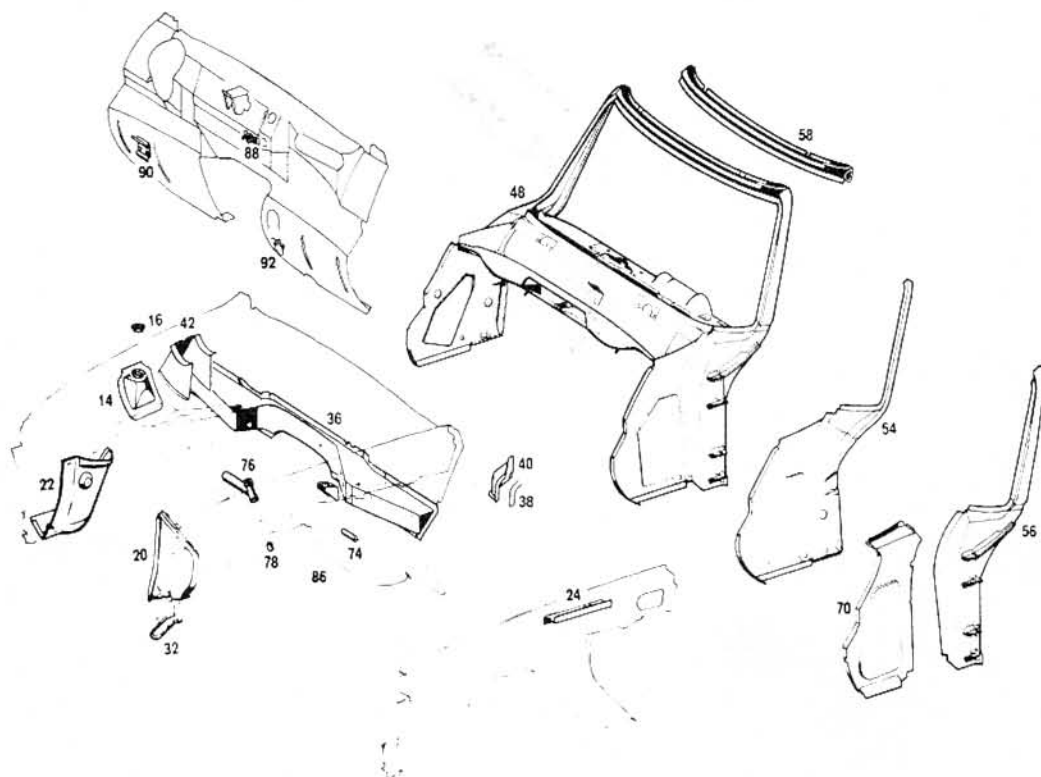


TABLE 62/3 FRONT PANELS

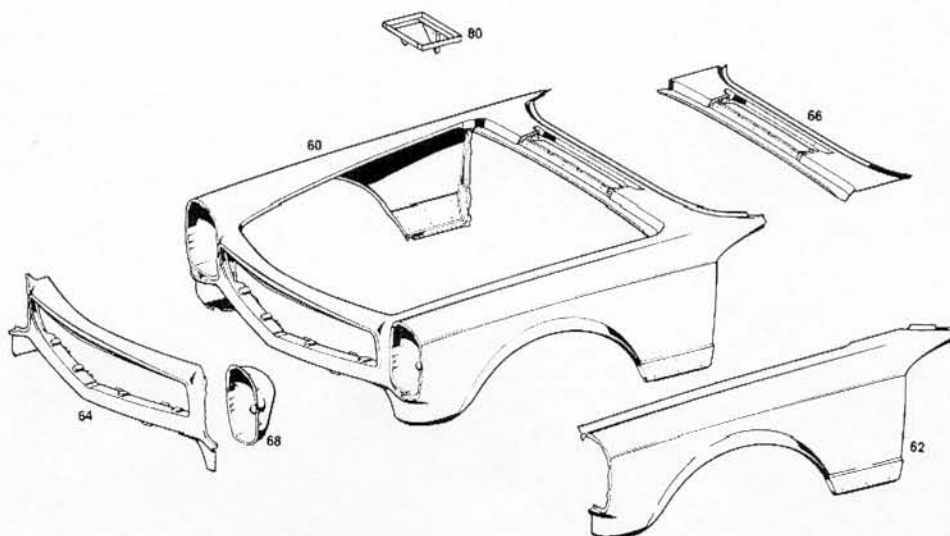


TABLE 64 REAR PANELS

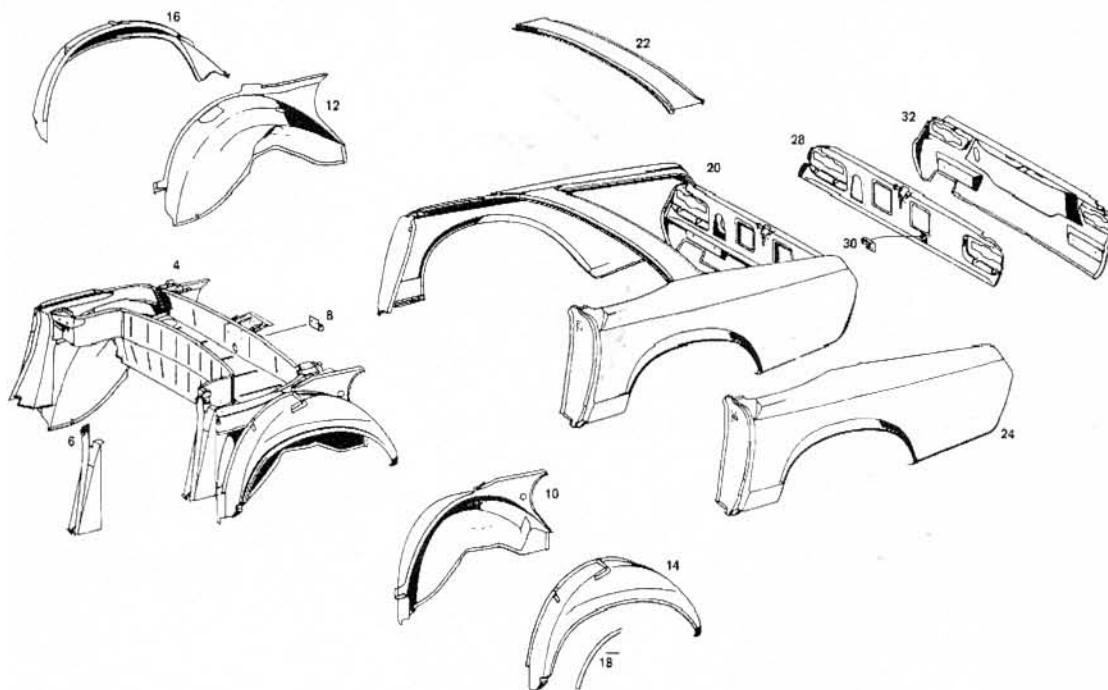


TABLE 67 WINDSCREEN

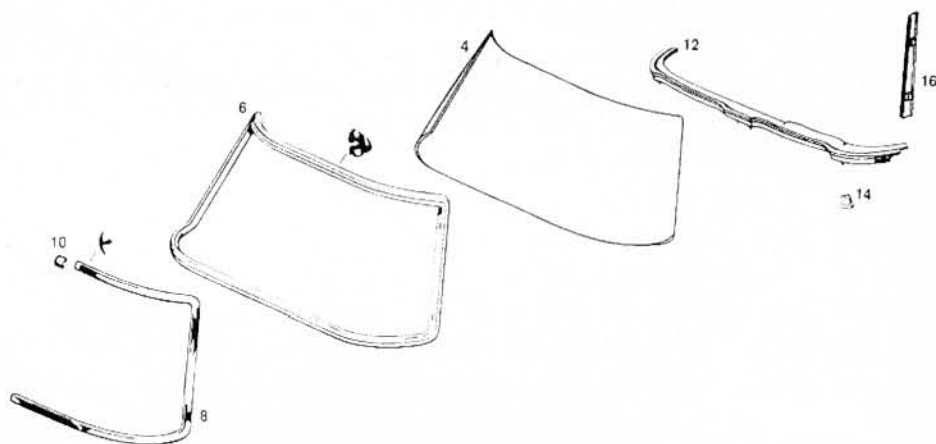


TABLE 68/1 COVERING & LININGS

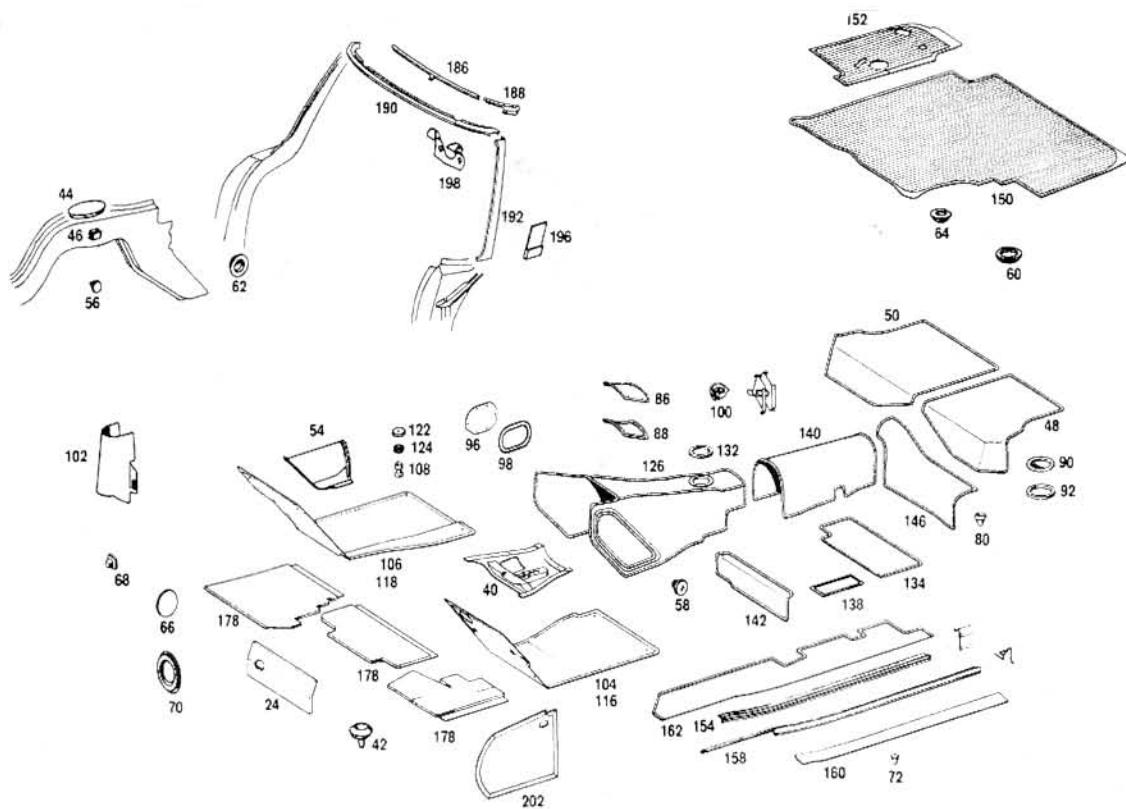




TABLE 68/2 DASHBOARD FITTINGS

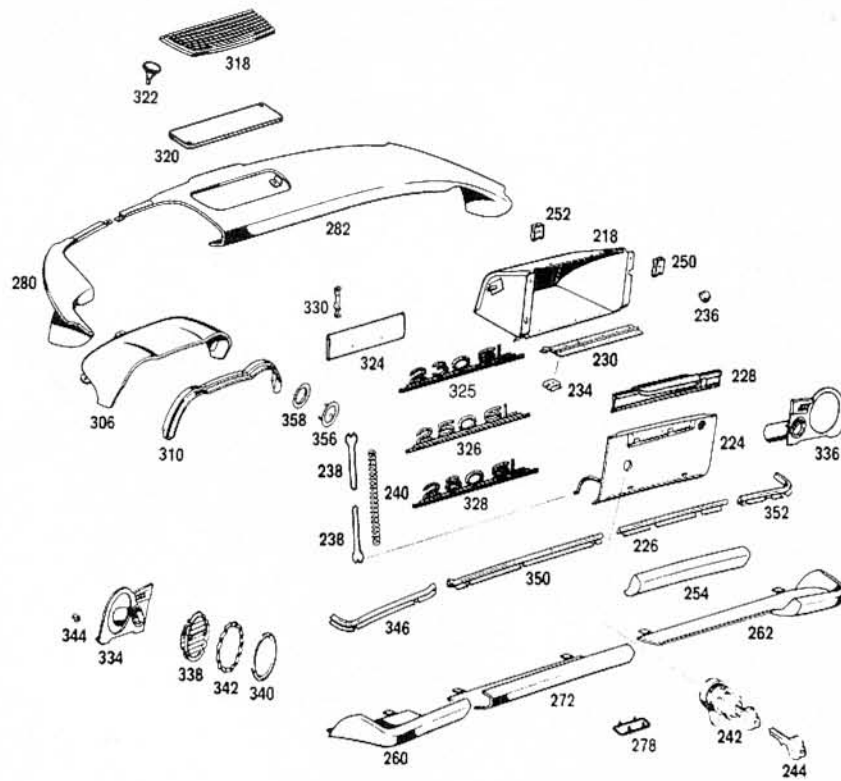


TABLE 69 EXTERIOR TRIM & BOOT LININGS

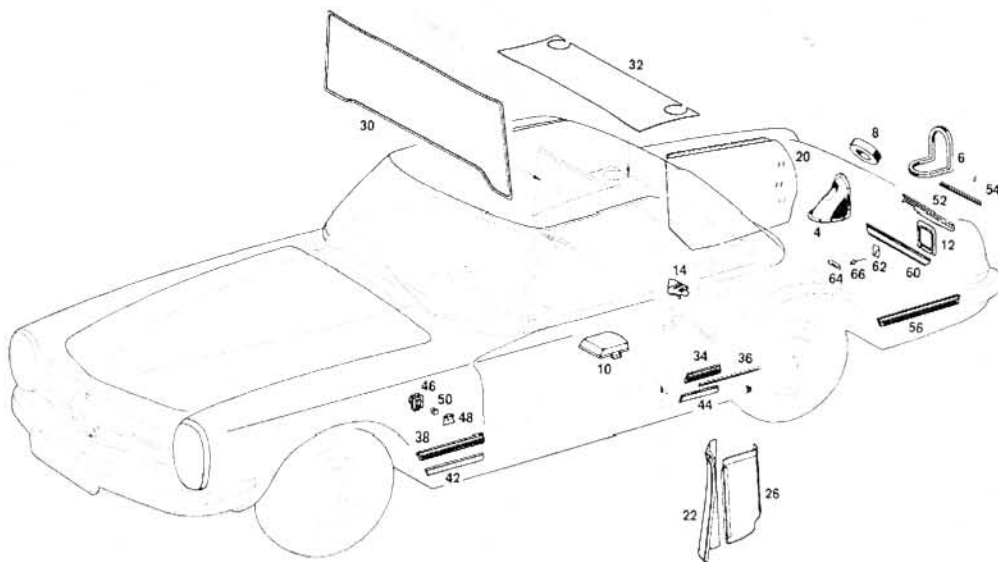


TABLE 72/1 DOORS

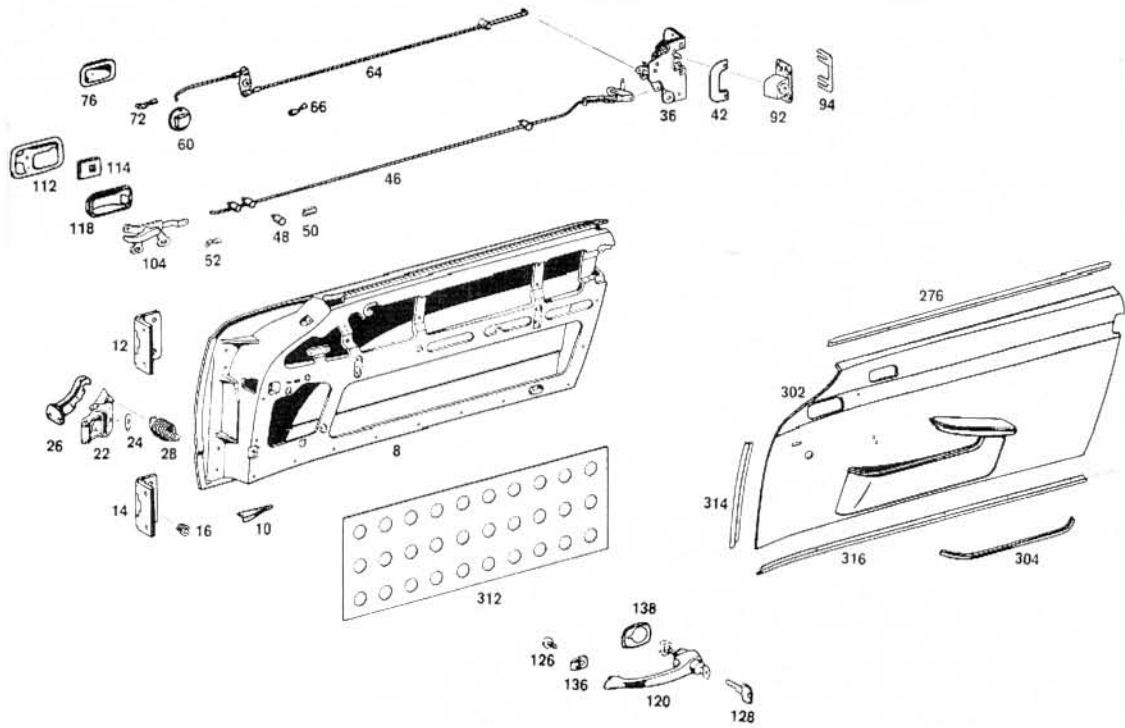


TABLE 72/2 DOORS

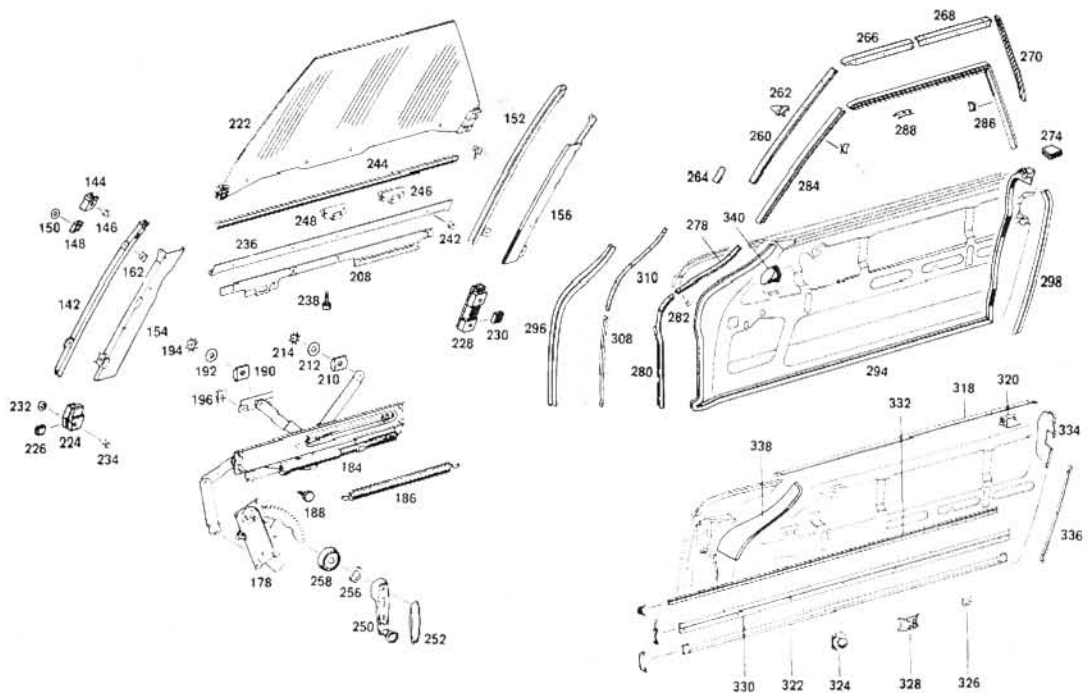


TABLE 75 BOOT LID & REAR FLAP

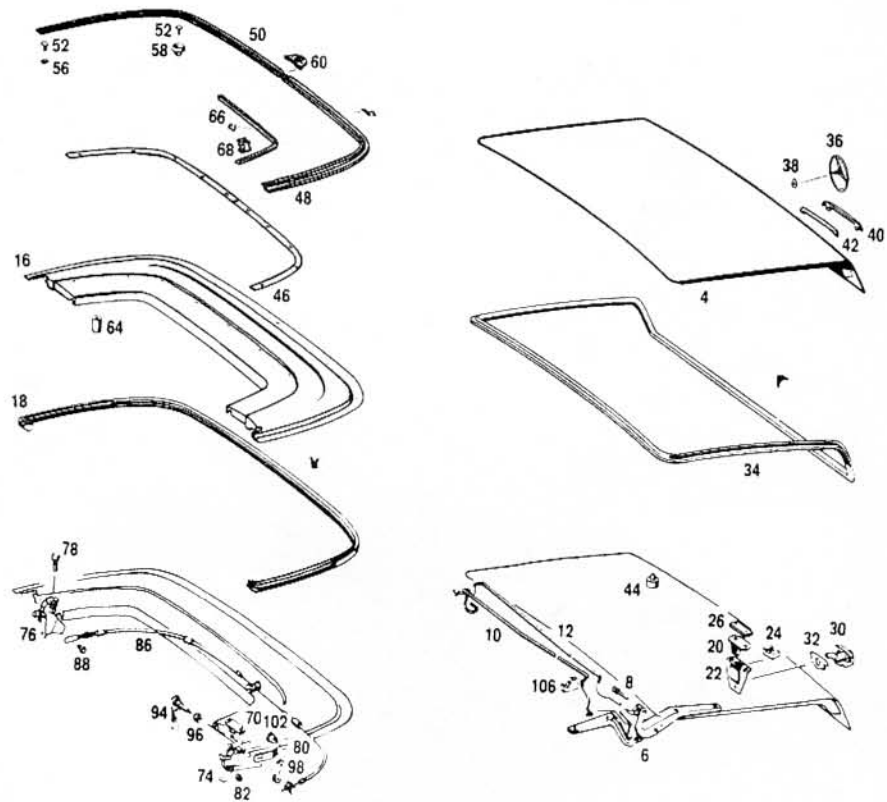


TABLE 77 SOFT TOP

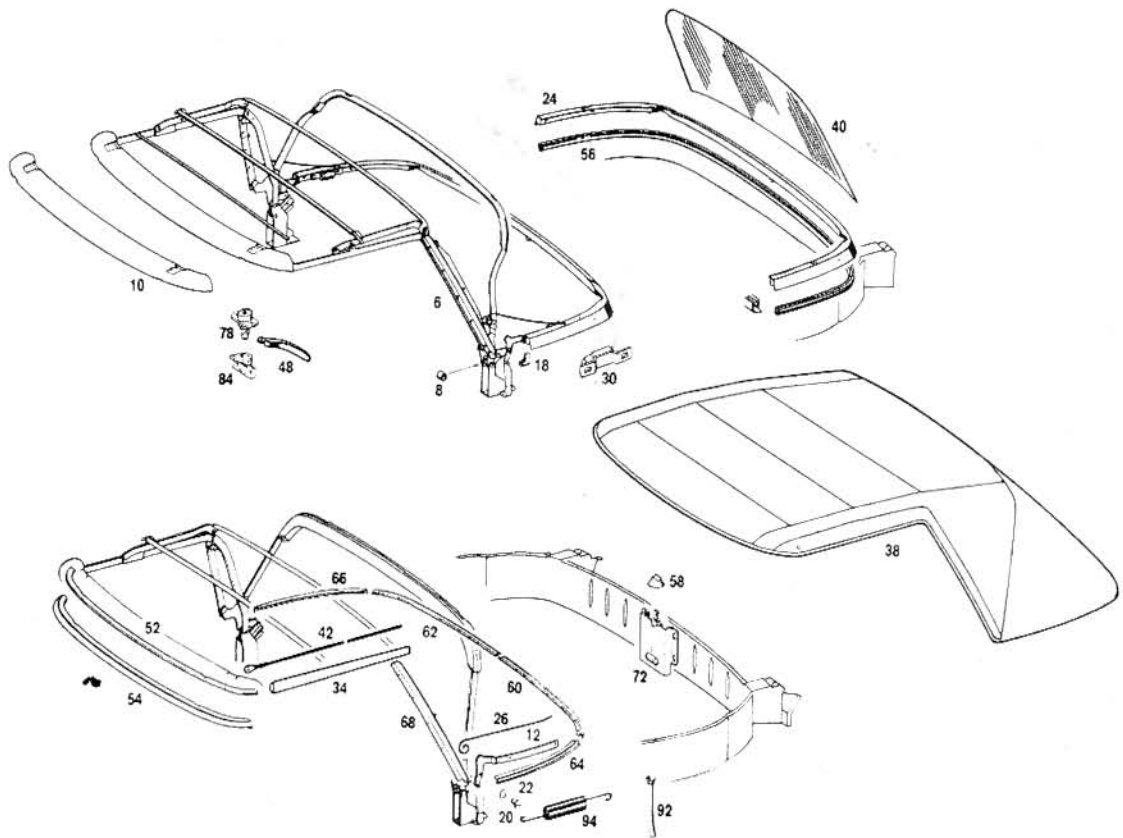


TABLE 79/1 HARDTOP

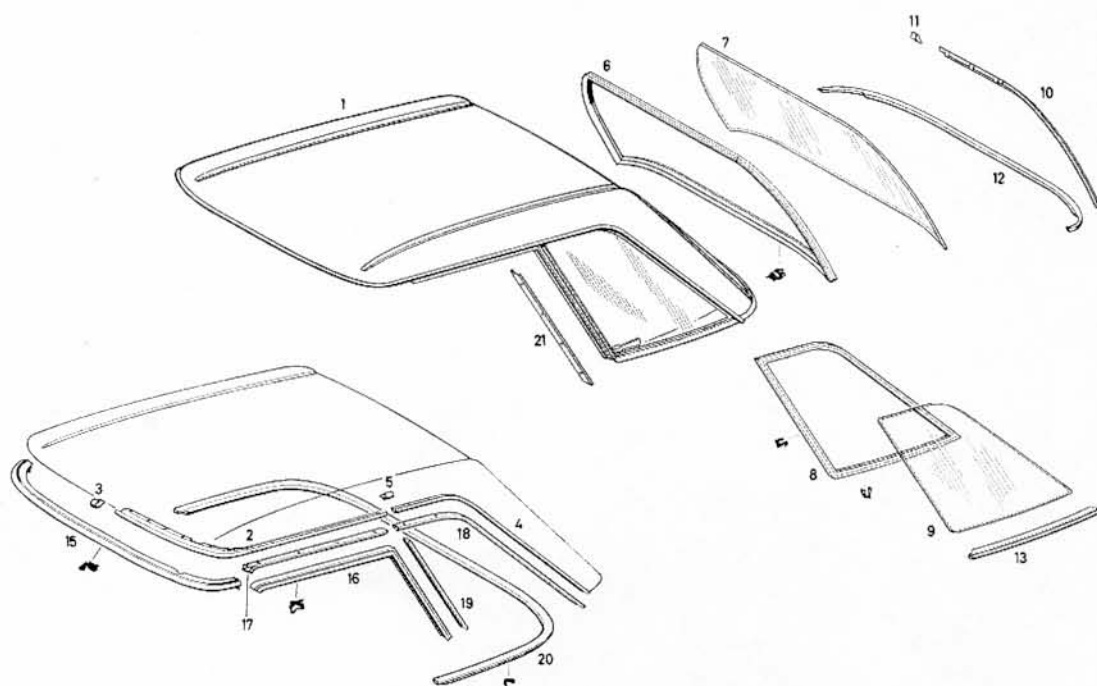


TABLE 79/2 HARDTOP

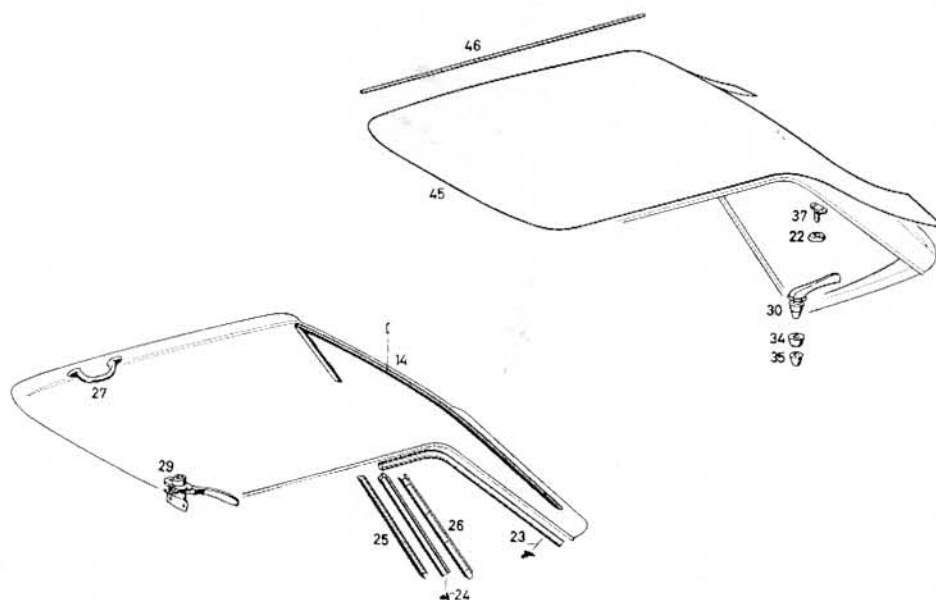


TABLE 81 APPOINTMENTS

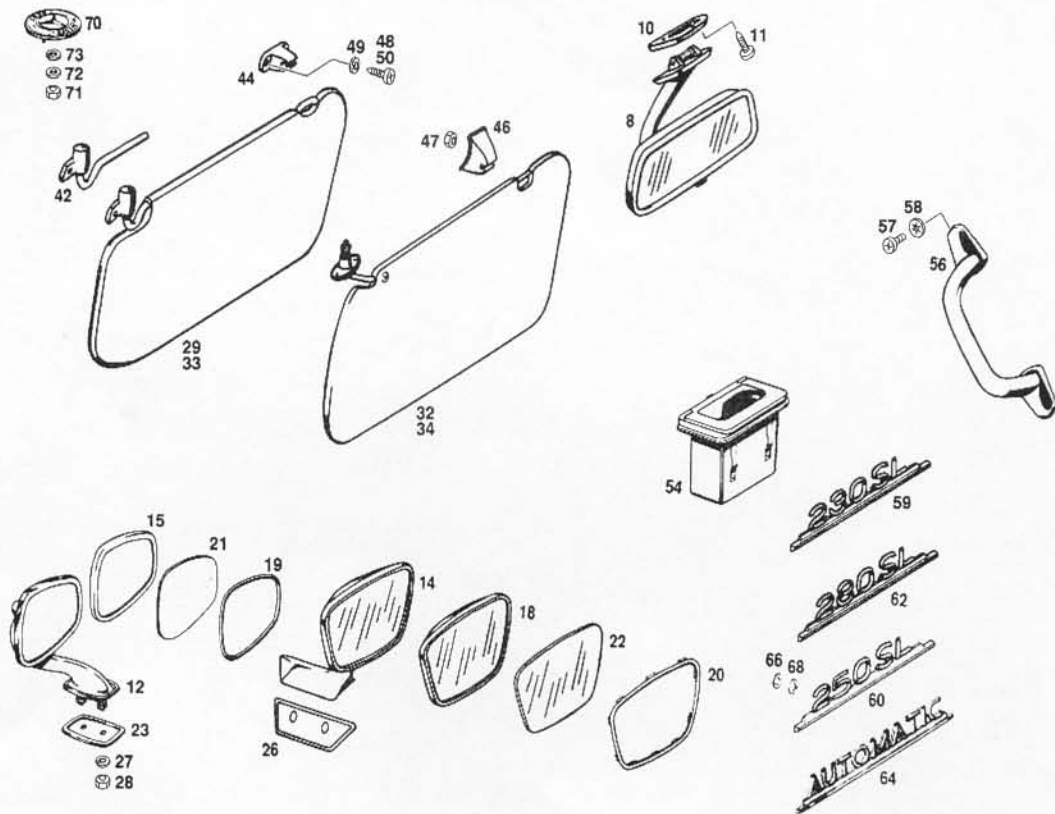


TABLE 82/1 ELECTRICS

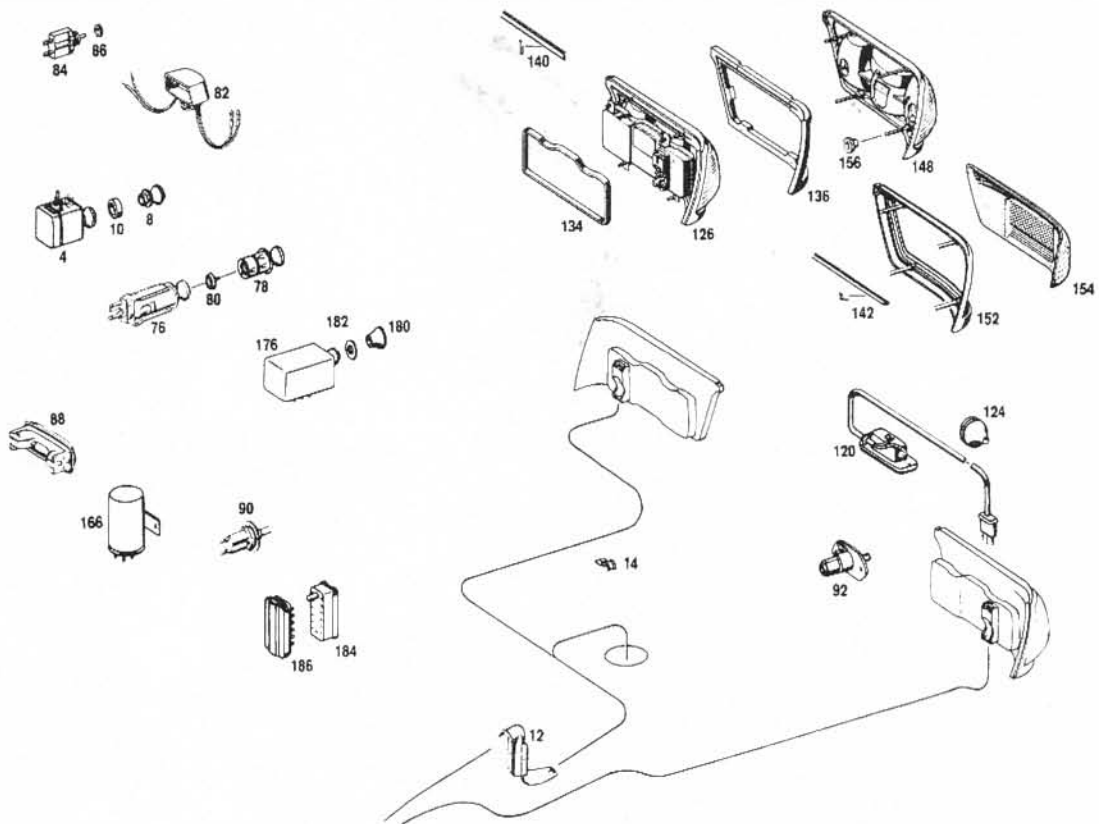


TABLE 82/2 ELECTRICS

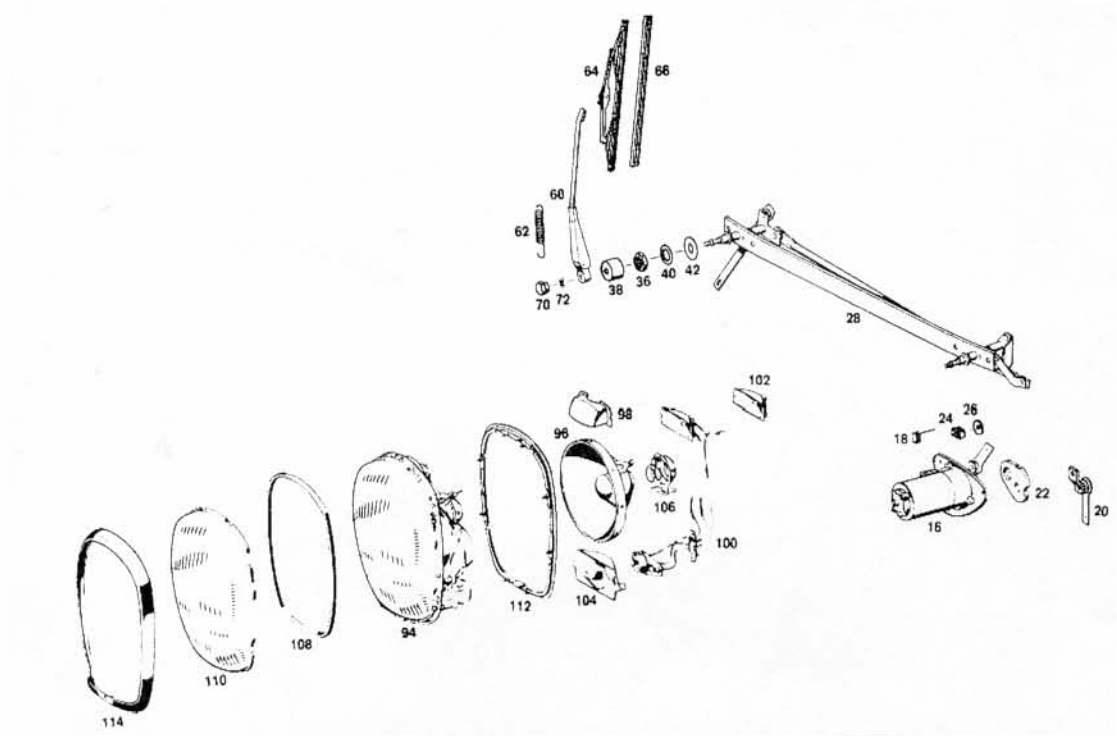


TABLE 83 HEATER

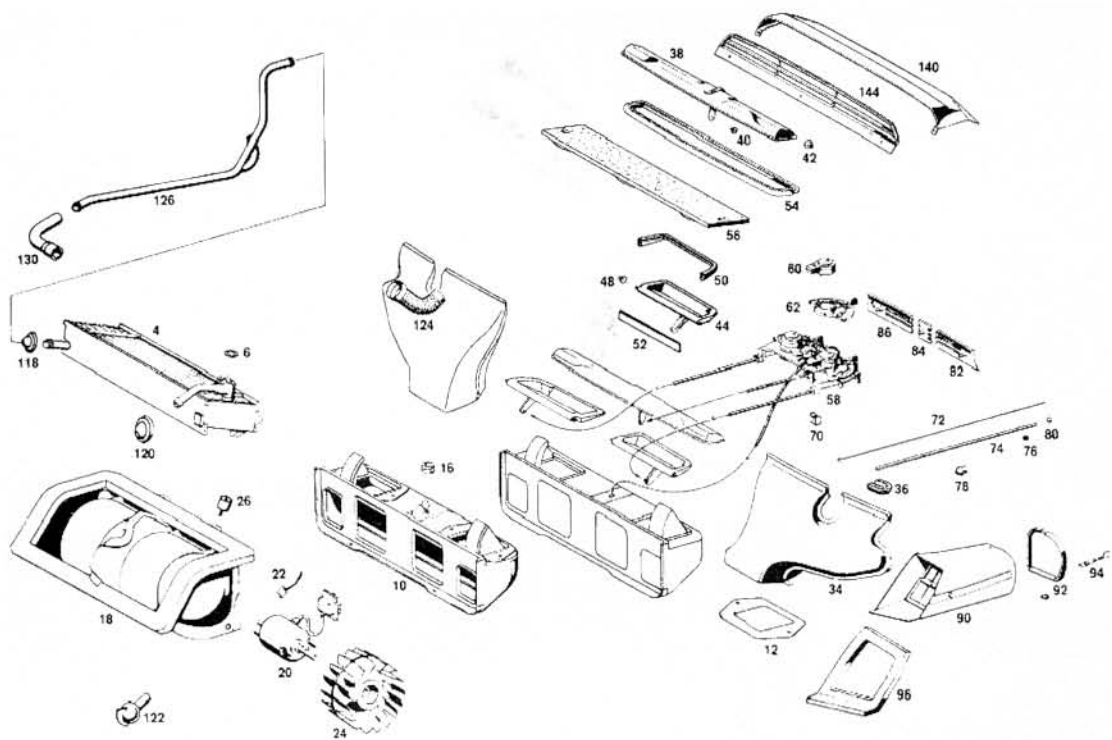


TABLE 86 WINDSCREEN WASHER

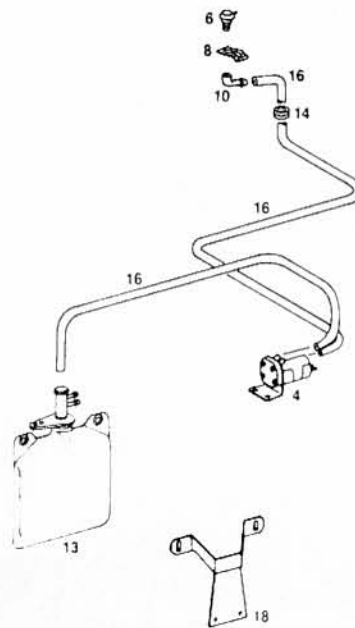


TABLE 88/1 BUMPERS, SILL COVERS & SPLASH PANELS

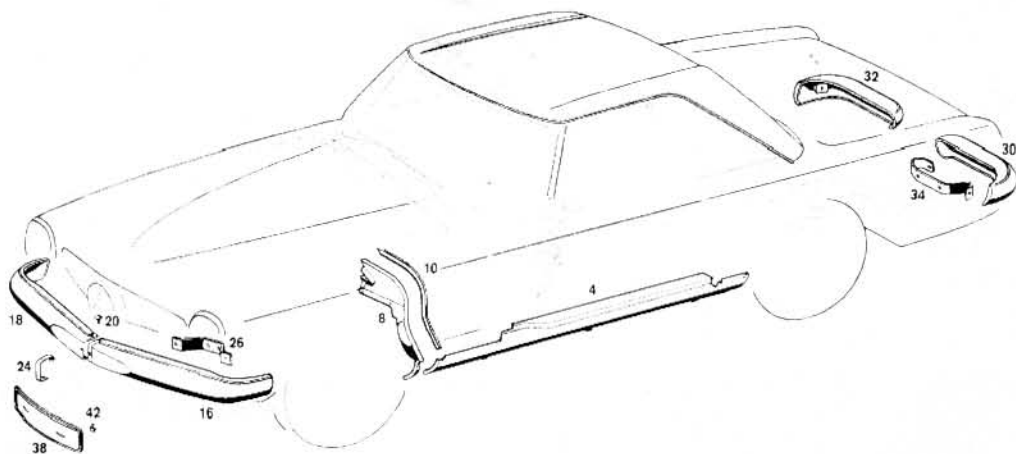


TABLE 88/2 BONNET & FRONT ORNAMENT

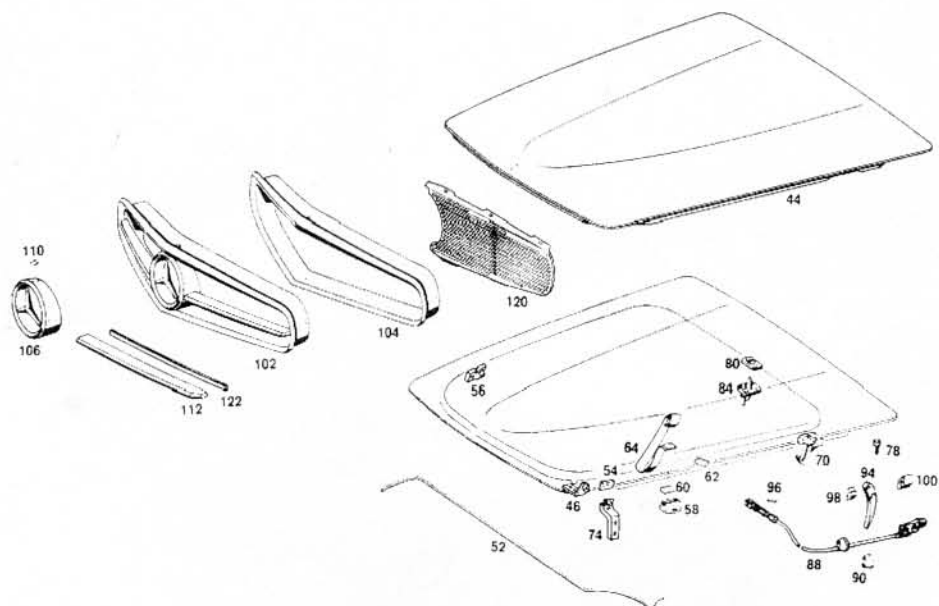


TABLE 91 SEATS

